

# Thermal Imagers / Imager Thermometers

The Thermal Imager is designed for Non-contact detection and calculation of apparent surface temperature, and the thermal image creation is based on the temperature variation. Imager Thermometers provide fast and accurate readings for most surface temperature measurements with TFT color LCD display & Imager Video format. Built for tough work environments, these high-performance, fully radiometric imagers are ideal for troubleshooting electrical systems, electro-mechanical equipment, process equipment, HVAC/R equipment and others.

## High Performance Industrial Thermal Imagers

The ultimate tools for troubleshooting and maintenance (see page 20)



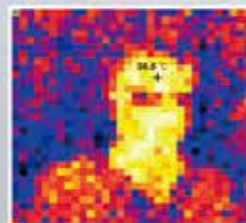
## Industrial-Commercial Thermal Imagers

The ultimate tools for energy audits, building maintenance, restoration and remediation. (see page 25)



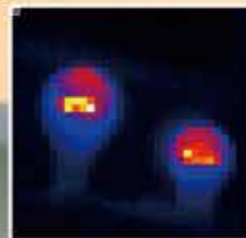
## 32x31 pixels Imager Thermometer

(see page 31)



## 32x31 pixels Imager Thermometer

(see page 32)



## Applications

- Plant/General Maintenance
- HVAC/R
- Transportation/Automotive
- Cooling and Reheating
- Serving areas
- Food service Equipment
- Cold storage



## DT-9897

### 640 x 480 High Performance Industrial Thermal Imager

9897 640x480 High Resolution and Performance Industrial Thermal Imager is a perfect tool for even small temperature differences that could indicate problems with excellent thermal sensitivity. Built for tough work environments, these high-performance, fully radiometric imagers are ideal for troubleshooting electrical systems, electro-mechanical equipment, process equipment, HVAC/R equipment and others.

- Engineered and tested to withstand 2 m (6.5 ft) drop and dust&water IP 65 rating
- Bump/Vibration, 25g(IEC60068-2-29)/2g(IEC60068-2-6)
- Innovative protective lens cover protects the lens when not in use
- Identify even small temperature differences that could indicate problems with excellent thermal sensitivity (NETD), find problems quickly
- Even the smallest details become visible with the large, widescreen full color LCD display
- Meterbox software is strong for enhanced problem detection and analysis capabilities
- New operation system is easier for your inspection application

## Specifications

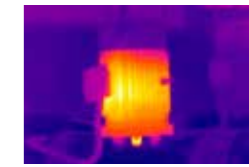
Imaging and optical data	
IR resolution	640x480pixels, focal plane array (FPA), uncooled microbolometer
Field of View (FOV)	24.6°x 19.8°
Minimum focus distance	0.3m (0.99ft.)
Spatial resolution (IFOV) 0.45mrad	
Thermal sensitivity/NETD	< 0.05°C @ +30°C (+86°F) / 50 mK
Image frequency	50Hz
Focus	Manual
Zoom	1-32x continuous, digital zoom
Rotate	0-360°, continuous change by 1°
Image presentation	
Display	3.5" TFT , capacitive touch screen
Image modes	IR image, visual image, picture in picture
Picture in Picture	IR area on visual image or visual image area on IR
Color palettes	GRAY/GRAY IRON/IRON/RAINBOW/FEATHER
Measurement	
Object temperature range	Low range: -20°C to +150°C (-4°F to +302°F) High range: 0°C to +400°C (+32°F to +752°F)
Accuracy	±2°C (±3.6°F) or ±2% of reading
Measurement analysis	
Spotmeter	3
Emissivity adjustable	0.01~1.0 Adjustable
Line	2 lines(horizontal and vertical)
Area	3 boxes with max. /min. /average
Automatic hot /cold detection	Auto hot or cold spotmeter marks
Difference temperature	Delta temperature between measurement pointer and reference pointer
Set-up	
Laser / floodlight	< class2 / white LED floodlight
Set-up commands	Local adaptation of units, language, date and time formats, information of camera
Language selection	English, Chinese, French, German, Spanish
Storage of videos/images	
Storage media	4Gbytes Micro SD card, Standard JPEG, including measurement data, on memory card > 1000 pictures
Video storage format	Standard MPEG-4, 640x480@30fps, on memory card > 60 minutes
Video storage mode	IR/visual images; simultaneous storage of IR and visual images
Digital camera	
Built-in visible light digital camera	2 Mega Pixels
Data communication interfaces	
USB interfaces	USB-mini, data transform between camera and PC remote control, live video
Wi-Fi connectivity	Wi-Fi connectivity allows to send images and data to mobile devices remote control, live video
Video out	Composite(PAL and NTSC)
Power system	
Battery	Lithium polymer battery, 4 hours operating time
Input voltage	DC 9V to 12V
Charging system	In camera (AC adapter)

Model: 9897

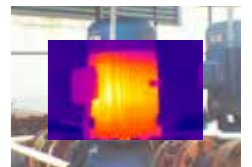


EMC  
EN: 61326-1  
EN: 61010-1

Wi-Fi Connectivity/  
Bluetooth Communication



Full Infrared



Picture-in-Picture



Color Alarm



Full visible light



11mm Lens  
RL-11



38mm Lens  
RL-38



22mm Lens  
RL-22



**Size(HxWxD):** 243mm x 103mm x 160mm **Weight:** 920g  
**Accessories:** Hard transport case, 38mm lens, Sun Visor, Tripod base, AC charger/Power supply, Earphone, Battery, Camera lens cap, software CD-ROM, Handstrap, micro SD card, USB cable & RCA cable, Gift box.





Model: 9885

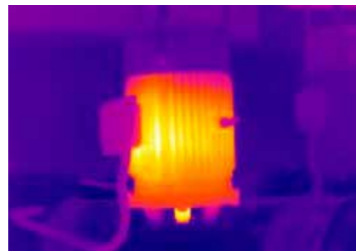


EMC  
EN: 61326-1  
EN: 61010-1

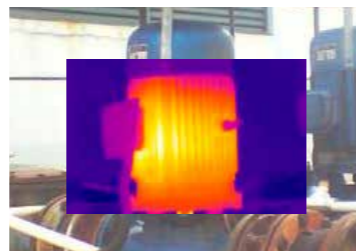
9885/9887 is High Performance Thermal Imager with high resolution 384x288, easy to help you to find the potential problems with innovation features and functionality, you can perform infrared inspections faster and more efficiently and thoroughly document problem areas for additional following:

**Key features**

- 384x288 High Performance & high resolution Thermal Imager with TFT color LCD display
- Professional IR-optical focus system ensures that images are in good focus for optimum image clarity and scanning convenience.
- Capture additional measurements fast and conveniently with wireless modules (9887 only)
- Meterbox analysis system—quickly identify and keep track of inspection locations by adding digital images of important information and surrounding areas
- Find problems faster and easier with accurately identify potential issues by combining digital and IR images
- Picture in Picture function Displays thermal image super-imposed over a digital image
- LED Flashlight allows the visual camera and fusion to be used in poorly lit environments
- Wide Temperature Range from -20 to +400°C targeting electrical and industrial applications
- ±2% Accuracy for reliable temperature measurement
- The image rotation has the ability to automatically rotate the active image
- Audio recorded with the video image acts a speaker to listen to audio recorded with the video image
- Capacitive touch screen is easier, productive and effective to operate it
- Lithium polymer Rechargeable Battery lasts >4hrs continuous use; replaceable
- An easy-to-access thumbnail image gallery helps you to quickly review and find your thermal images.
- Area (Min/Max) mode shows the Minimum or the Maximum Temperature reading in the selected area
- A conveniently located button activates the laser pointer that will help you associate the hot or cold spot in the thermal image with the real physical target in the field.
- In order to adapt the device to every situation both wide angle and tele-lenses are available.
- Equipped with standard video, USB outputs as well as a removable SD card.
- The IR video can be streamed to a PC via USB or wifi (DT-9887 only).



Full Infrared



Picture-in-Picture



Color Alarm



Full visible light



Model: 9887

Wi-Fi Connectivity/  
Bluetooth Communication



11mm Lens  
RL-11

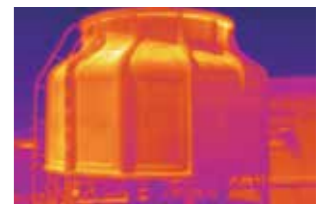
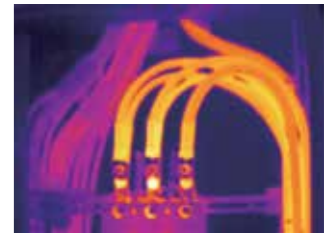


38mm Lens RL-38  
22mm Lens RL-22



**Size(HxWxD):** 243mm x 103mm x 160mm **Weight:** 920g  
**Accessories:** Hard transport case, 22mm lens, Sun Visor, Tripod base, AC charger/Power supply, Earphone, Battery, Camera lens cap, software CD-ROM, Handstrap, micro SD card, USB cable & RCA cable, Gift box.

Specifications	9885	9887	
<b>Imaging and optical data</b>			
IR resolution	384x288pixels, focal plane array (FPA), uncooled microbolometer	*	*
Field of View (FOV)	47.1°x 36.2°	*	*
Minimum focus distance	0.3m (0.99ft.)	*	*
Spatial resolution (IFOV)	2.28 mrad	*	*
Thermal sensitivity/NETD	< 0.05°C @ +30°C (+86°F) / 50 mK	*	*
Image frequency	50Hz	*	*
Focus	Manual	*	*
Zoom	32x continuous, digital zoom	*	*
Rotate	0-360°, continuous change by 1°	*	*
<b>Image presentation</b>			
Display	3.5" TFT , capacitive touch screen	*	*
Image modes	IR image, visual image, picture in picture	*	*
Picture in Picture	IR area on visual image or visual image area on IR	*	*
Color palettes	GRAY/GRAY IRON/IRON/RAINBOW/FEATHER	*	*
<b>Measurement</b>			
Object temperature range	Low range: -20°C to +150°C (-4°F to +302°F) High range: 0°C to +400°C (+32°F to +752°F)	*	*
Accuracy	±2°C (±3.6°F) or ±2% of reading	*	*
<b>Measurement analysis</b>			
Spotmeter	3	*	*
Emissivity adjustable	0.01~1.0 Adjustable	*	*
Emissivity table	Emissivity table of predefined materials	*	*
Line	2 lines(horizontal and vertical)	*	*
Area	3 boxes with max. /min. /average	*	*
Automatic hot /cold detection	Auto hot or cold spotmeter marks	*	*
Isotherm	Detect high/low temperature/interval	*	*
Measurement corrections	Emissivity, ambient temperature, distance, relative humidity, offset temperature	*	*
<b>Set-up</b>			
Laser / floodlight	< class2 / white LED floodlight	*	*
Set-up commands	Local adaptation of units, language, date and time formats, information of camera	*	*
Language selection	English, Chinese, French, German, Spanish	*	*
<b>Storage of videos</b>			
Storage media	4Gbytes Micro SD card	*	*
Video storage format	Standard MPEG-4, 640x480@30fps, on memory card > 60 minutes	*	*
Video storage mode	IR/visual images; simultaneous storage of IR and visual images	*	*
<b>Storage of images</b>			
Image storage format	Standard JPEG, including measurement data, on memory card > 1000 pictures	*	*
Image storage mode	IR/visual images; simultaneous storage of IR and visual images	*	*
<b>Digital camera</b>			
Built-in visible light digital camera	640x480 Pixels	*	*
<b>Data communication interfaces</b>			
USB interfaces	USB-mini, data transform between camera and PC remote control, live video	*	*
Wi-Fi connectivity	Wi-Fi connectivity allows to send images and data to mobile devices remote control, live video	*	*
Video out	Composite(PAL and NTSC)	*	*
<b>Power system</b>			
Battery	Lithium polymer battery, 4 hours operating time	*	*
Input voltage	DC 9V to 12V	*	*
Charging system	In camera (AC adapter)	*	*
Power management	Automatic shutdown and sleep mode (user selectable)	*	*
<b>Environmental data</b>			
Operating temp range	-20°C to +50°C (-4°F to +122°F)	*	*
Storage temp range	-40°C to +70°C (-40°F to +158°F)	*	*
Relative humidity (operating and storage)	10%RH~90%RH	*	*
Encapsulation	IP65	*	*
Drop test	2m	*	*
Bump	25g(IEC60068-2-29)	*	*
Vibration	2g(IEC60068-2-6)	*	*



**Applications**

- Plant/General Maintenance
- HVAC/R
- Transportation/Automotive
- Cooling and Reheating
- Serving areas
- Food service Equipment
- Cold storage



9873 160x120 Thermal Imager is basic one only with full IR, 9875/9877 160x120 High Performance Thermal Imager is easy to help you to find the potential problems with innovation features and functionality, you can perform infrared inspections faster and more efficiently and thoroughly document problem areas for additional following:

**Key features**

- 160x120 High Performance Thermal Imager with high resolution TFT color LCD display
- Professional IR-optical focus system ensures that images are in good focus for optimum image clarity and scanning convenience.
- Capture additional measurements fast and conveniently with wireless modules (9877 only)
- Meterbox analysis system—quickly identify and keep track of inspection locations by adding digital images of important information and surrounding areas
- Find problems faster and easier with accurately identify potential issues by combining digital and IR images
- Picture in Picture function Displays thermal image super-imposed over a digital image
- LED Flashlight allows the visual camera and fusion to be used in poorly lit environments
- Wide Temperature Range from -20°to +400°C targeting electrical and industrial applications
- ±2% Accuracy for reliable temperature measurement
- The image rotation has the ability to automatically rotate the acti19ve image
- Audio recorded with the video image acts a speaker to listen to audio recorded with the video image
- Capacitive touch screen is easier, productive and effective to operate it
- Lithium polymer Rechargeable Battery lasts >4hrs continuous use; replaceable
- An easy-to-access thumbnail image gallery helps you to quickly review and find your thermal images.
- Area (Min/Max) Mode shows the Minimum or the Maximum Temperature reading in the selected area
- A conveniently located button activates the laser pointer that will help you associate the hot or cold spot in the thermal image with the real physical target in the field.
- In order to adapt the device to every situation both wide angle and tele-lenses are available.
- Equipped with standard video, USB outputs as well as a removable SD card.
- The IR video can be streamed to a PC via USB or wifi (DT-9877 only).



Model: 9875/9877

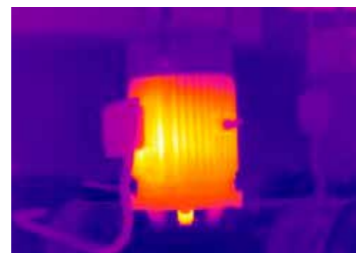
Wi-Fi Connectivity/  
Bluetooth Communication



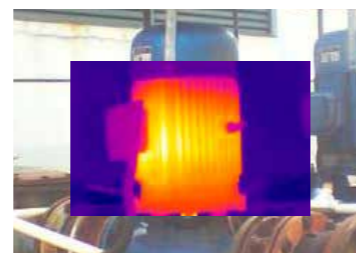
Model: 9873



EMC  
EN: 61326-1  
EN: 61010-1



Full Infrared



Picture-in-Picture



Color Alarm



Full visible light



11mm Lens  
RL-11

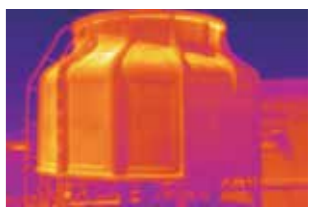
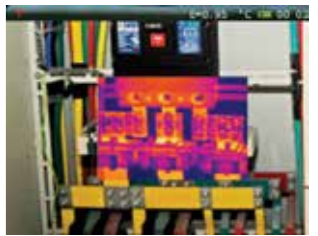


33mm Lens RL-33    22mm Lens RL-22



**Size(HxWxD):** 243mm x 103mm x 160mm **Weight:** 920g  
**Accessories:** Hard transport case (9875,9877), 7.5mm lens, Sun Visor, Tripod base, AC charger/Power supply, Earphone, Battery, Camera lens cap, software CD-ROM, Handstrap, micro SD card, USB cable & RCA cable, Gift box.

Specifications		9871	9873B	9873	9875	9877
<b>Imaging and optical data</b>						
IR resolution	160x120pixels, focal plane array (FPA), uncooled microbolometer	80x80	*	*	*	*
Field of View (FOV)	29.8° × 22.6°	17°x17°	*	*	*	*
Minimum focus distance	0.2m (0.66ft.)	0.3m (0.99ft.)	*	*	*	*
Spatial resolution	(IFOV) 3.33 mrad	3.78mrad	*	*	*	*
Thermal sensitivity/NETD	< 0.08°C @ +30°C (+86°F) / 80 mK	< 0.1°C	*	*	*	*
Image frequency	50Hz	*	*	*	*	*
Focus	Manual	*	*	*	*	*
Zoom	1-20x continuous, digital zoom	*	*	*	*	*
Rotate	0-360°, continuous change by 1°	*	*	*	*	*
<b>Image presentation</b>						
Display	3.5" TFT , capacitive touch screen	*	*	*	*	*
Image modes	IR image, visual image, picture in picture	IR image only	*	*	*	*
Picture in Picture	IR area on visual image or visual image area on IR	None	*	*	*	*
Color palettes	GRAY/GRAY IRON/IRON/RAINBOW/FEATHER	*	*	*	*	*
<b>Measurement</b>						
Object temperature range	Low range: -20°C to +150°C (-4°F to +302°F) High range: 0°C to +400°C (+32°F to +752°F)	*	*	*	*	*
Accuracy	±2°C (±3.6°F) or ±2% of reading	*	*	*	*	*
<b>Measurement analysis</b>						
Spotmeter	3	*	*	*	*	*
Emissivity adjustable	0.01~1.0 Adjustable	*	*	*	*	*
Emissivity table	Emissivity table of predefined materials	*	*	*	*	*
Line	2 lines(horizontal and vertical)	None	*	*	*	*
Area	3 boxes with max. /min. /average	None	*	*	*	*
Automatic hot /cold detection	Auto hot or cold spotmeter marks	*	*	*	*	*
Isotherm	Detect high/low temperature/interval	None	*	*	*	*
Measurement corrections	Emissivity, ambient temperature, distance, relative humidity, offset temperature	*	*	*	*	*
<b>Set-up</b>						
Laser / floodlight	< class2 / white LED floodlight	None	*	*	*	*
Set-up commands	Local adaptation of units, language, date and time formats, information of camera	*	*	*	*	*
Language selection	English, Chinese, French, German, Spanish	*	*	*	*	*
<b>Storage of videos/images</b>						
Storage media	4Gbytes Micro SD card	*	*	*	*	*
Video storage format	Standard MPEG-4, 640x480@30fps, on memory card > 60 minutes	*	*	*	*	*
Image storage format	Standard JPEG, including measurement data, on memory card > 1000 pictures	*	*	*	*	*
Storage mode	IR/visual images; simultaneous storage of IR and visual images	IR image only	*	*	*	*
<b>Digital camera</b>						
Built-in visible light digital camera	640x480 Pixels	None	*	*	*	*
<b>Data communication interfaces</b>						
USB interfaces	USB-mini, data transform between camera and PC remote control, live video	*	*	*	*	*
Wi-Fi connectivity	Wi-Fi connectivity allows to send images and data to mobile devices remote control, live video	None	*	*	*	*
Video out	Composite(PAL and NTSC)	*	*	*	*	*
<b>Power system</b>						
Battery	Lithium polymer battery, 4 hours operating time	*	*	*	*	*
Input voltage	DC 9V to 12V	*	*	*	*	*
Charging system	In camera (AC adapter)	*	*	*	*	*
Power management	Automatic shutdown and sleep mode (user selectable)	*	*	*	*	*
<b>Environmental data</b>						
Operating temp range	-20°C to +50°C (-4°F to +122°F)	*	*	*	*	*
Storage temp range	-40°C to +70°C (-40°F to +158°F)	*	*	*	*	*
Relative humidity (operating and storage)	10%RH~90%RH	*	*	*	*	*
Encapsulation	IP65	*	*	*	*	*
Drop test	2m	*	*	*	*	*
Bump	25g(IEC60068-2-29)	*	*	*	*	*
Vibration	2g(IEC60068-2-6)	*	*	*	*	*

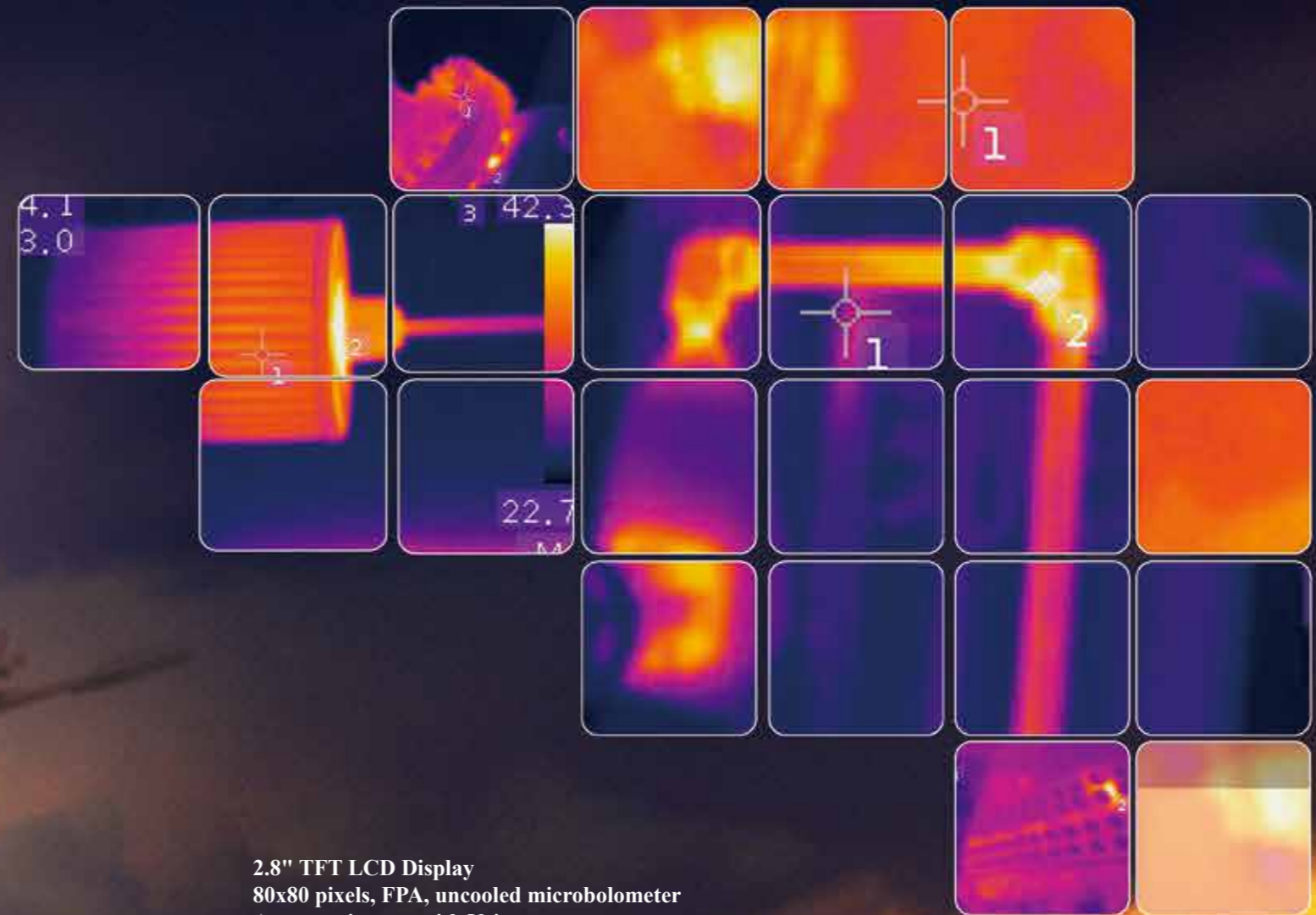


**Applications**

- Plant/General Maintenance
- HVAC/R
- Transportation/Automotive
- Cooling and Reheating
- Serving areas
- Food service Equipment
- Cold storage



The Thermal Imager is designed for Non-contact detection and calculation of apparent surface temperature, fully radiometric imagers are ideal for troubleshooting electrical systems, electro-mechanical equipment, process equipment, HVAC/R equipment and others.



2.8" TFT LCD Display  
80x80 pixels, FPA, uncooled microbolometer  
Annotate images with Voice  
Picture in Picture  
32X Continuous Zoom  
5 Megapixels Digital camera

HDMI High resolution video output  
Built-in 100M Memory for 80 pictures or one minute video record  
Wi-Fi connectivity  
Transfers images and data to mobile devices to share reports and critical information quickly (983 only)



980 (80x80), 982/983 (160x120) Thermal Imagers are designed to make your work easier, more productive and effective. 160 × 120 resolution at 50 Hz for real-time capture; Temperature range from -20°C to 350°C (-4°F to 662°F), 32X continuous zoom, picture-in-picture, voice comment recording and text annotation on images. Hot/Cold spot marker automatically finds the hottest and coldest spots. It includes memory card, Lithium polymer battery & power supply, and USB cable. Wi-Fi connectivity allows the Infrared Thermal Camera to send images and data to mobile devices.



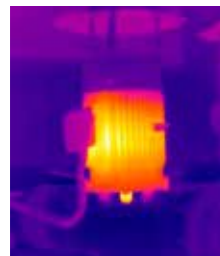
Model: 983

## Product characteristics

- High Resolution IR Images**  
19,200 pixels (160x120) Infrared resolution(982/983)
- Visible Light Digital Camera**  
5 Megapixels Digital camera resolution with flash provides sharp images regardless of lighting conditions
- Picture in Picture**  
Displays thermal image super-imposed over a digital image
- LED Flashlight**  
Allows the visual camera and fusion to be used in poorly lit environments
- Wide Temperature Range**  
From -20 to +350°C targeting electrical and industrial applications
- ±2% Accuracy**  
reliable temperature measurement
- Thumbnail view**  
Easy to view and analyze images quickly
- Audio recorded with the video image**  
A speaker to listen to audio recorded with the video image
- Li-Ion Rechargeable Battery**  
Lasts >4hrs continuous use; replaceable
- HDMI**  
HDMI High resolution video output
- Inside 100M Memory**  
**About 80pictures or one minute video record**
- Copy to USB**  
Easy uploads images from camera to USB memory card
- Area (Min/Max) Mode**  
Shows the Minimum or the Maximum Temperature reading in the selected area
- Wi-Fi connectivity**  
Transfers images and data to mobile devices to share reports and critical information quickly (DT-983 only)



EMC  
EN: 61326-1  
EN: 61010-1



Full Infrared



Picture-in-Picture



Color Alarms



Full visible light

- 1 2.8" LCD Display
- 2 Annotate images with Voice
- 3 Picture-in-Picture
- 4 32X Continuous Zoom
- 5 5 Megapixels Digital camera
- 6 Min/Max with Auto Hot/Cold Spot Mark



Model: 980

Model: 982

Model: 983



Specifications	980	980A	982	982A	983	983A
<b>Imaging and optical data</b>						
IR resolution	80×80 pixels		160×120 pixels		160×120 pixels	
Focal Plane Array (FPA) / Spectral range	Uncooled microbolometer / 8–14 μm					
Focal length	9mm		7.5mm			
Field of View (FOV)	17x17°		22.6 x 29.8°			
Minimum focus distance	0.5m		0.2m			
Spatial resolution	3.78mrad		3.33mrad			
Thermal sensitivity/NETD	< 0.1°C /100mK		< 0.08°C /80mK			
Image frequency	50Hz					
Focus	Manual	Auto	Manual	Auto	Manual	Auto
Zoom	1-32x continuous, digital zoom					
<b>Image presentation</b>						
Image modes	IR image, visual image, picture in picture					
Picture in Picture	IR area on visual image					
Color palettes	IRON/Rainbow/Grey/Grey Inverted					
<b>Measurement</b>						
Object temperature range	-20°C to +150°C (-4°F to +302°F)		-20°C to +150°C (-4°F to +302°F)			
	0°C to +350°C (+32°F to +662°F)		0°C to +400°C (+32°F to +752°F)			
Accuracy	±2°C (±3.6°F) or ±2% of reading					
<b>Measurement analysis</b>						
Spotmeter	Center Spot, Auto hot or cold markers					
<b>Set-up</b>						
laser	< class2					
Language selection	English, Chinese, French, German, Spanish					
<b>Storage of videos/images</b>						
Inside Memory	100M bytes, About 80pictures or one minute video record					
Storage media	8Gbytes Micro SD card					
Video storage format	Standard MPEG-4, 1280x960@30fps, on memory card > 60 minutes					
Image storage format	Standard JPEG, including measurement data, on memory card > 1000 pictures					
<b>Digital camera</b>						
Built-in visible light digital camera	5 Megapixels					
Built-in digital lens data	59°					
<b>Data communication interfaces</b>						
Interfaces	USB-mini, audio, HDMI					
USB	Data transform between camera and PC , Live video between camera and PC					
Video out	HDMI					
<b>WiFi</b>						
Live video between device and PC	None				Yes	
Transfer images and data to mobile devices	None				Yes	
<b>Power system</b>						
Battery / Input voltage	Li-ion battery, 4 hours operating time / DC 5V					
Charging system	In camera (AC adapter)					
Power management	Automatic shutdown					



**Size(HxWxD):** 224mm x 77mm x 96mm  
**Weight:** 500g

**Accessories:** Infrared camera with lens, Earphone, Battery, software CD-ROM, Wrist strap, micro SD card, Adaptor, USB cable & HDMI cable, Gift box.



CAM80/CAM160/CAM384/CAM640 have compact structure, small size and light weight which are a solid durable product with high sensitivity, clarity images, precise measurement and flexible operation features. It can satisfy the demand of non-contact temperature measurement, fast fault detection and thermal field analysis in the field of industrial, electrical, electronics and other industries.

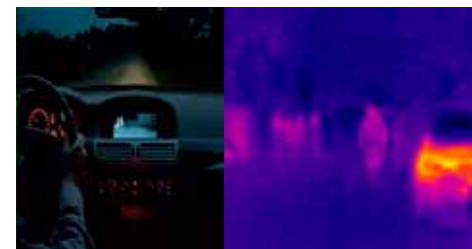
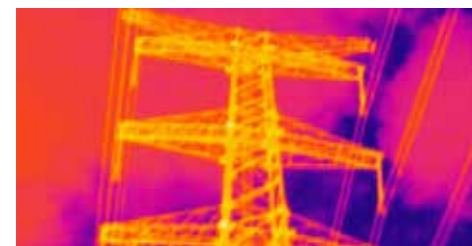
The leading end will complete all the image processing and temperature measurement then the analog video can output to a monitor directly.



Model: CAM160

#### Key Features:

- Composite video output, PAL or NTSC;
- Abundant interfaces, easy integration;
- 50Hz passive infrared imaging ensure the high frame rate security monitoring around the clock in all kinds of bad weather;
- With a variety of pseudo-color display;
- Image enhancement feature highlights the target details, easy to achieve target surveillance and recognition;
- Intelligent image filtering feature can reduce the image noise and improve the picture clarity;
- Automatic brightness contrast adjustment feature can adaptive adjust the brightness and contrast of the image based on the changing of the scene and object, so that the image is always in the best imaging results;
- Lenses: 7.5mm included, 22mm and 33mm optional;
- Real-time image monitoring, temperature alarm is configurable.



Specifications	CAM80	CAM160	CAM384	CAM640
<b>Imaging and optical data</b>				
Field of view (FOV) / Minimum focus distance	17x17°/0.5m	29.8x22.6°/0.2m	24.6°x 18.6°/ 0.5m	24.6°x 19.8°/ 0.3m
Spatial resolution (IFOV)	3.78mrad	3.33mrad	1.14 mrad	0.45
Thermal sensitivity/NETD	< 0.1°C /100mK	< 0.08°C /80mK	< 0.05°C /50mK	< 0.05°C /50mK
Image frequency	50HZ			
Focus mode	Manual			
Focal length	9mm	7.5mm	22mm	38mm
Focal Plane Array (FPA) / Spectral range	Uncooled microbolometer / 8-14 μm			
IR resolution	80x80	160x120	384x288	640x480
<b>Image presentation</b>				
Image modes	IR image only			
Color palettes	IRON, Rainbow, Grey, GreyInverted, Sepia, Blue_Red, Hot_Cold, Humidity			
<b>Measurement</b>				
Object temperature range	-20°C to +150°C (-4°F to +302°F) 0°C to +350°C (+32°F to +662°F)	-20°C to +150°C (-4°F to +302°F) 0°C to +400°C (+32°F to +752°F)		
Accuracy	±2°C (±3.6°F) or ±2% of reading			
<b>Measurement analysis</b>				
Spotmeter	Center Spot			
Automatic hot/cold detection	Auto hot or cold markers			
Emissivity correction	Variable from 0.01 to 1.0			
<b>Measurement corrections</b>				
Emissivity, ambient temperature, distance, relative humidity, offset temperature				
<b>Set-up</b>				
Set-up commands	Local adaptation of units, language, date and time formats, information of camera			
Languages	multinational			
<b>Data communication interfaces</b>				
Interfaces	USB, composite video			
USB	Remote control			
Video out	Composite(PAL and NTSC)			
<b>Power system</b>				
Input voltage	DC 9V to 12V			
<b>Options Lens</b>				
11mm		20.6°x 15.5°	47.1°x 36.2°	
22mm		10.4°x 7.8°		
33mm		6.9°x 5.2°		
38mm			14.4°x 10.8°	

#### Applications:

- Buildings, factories security monitoring;
- Border, ports, airports, railway stations and other big visitors flow rate places monitoring;
- Warehouse fire monitoring;
- Forest fire monitoring.



7.5mm Lens RL-7.5      33mm Lens RL-33      22mm Lens RL-22

**Size(HxWxD):** 195 mmx115mmx83mm

**Weight:** 1000g

**Accessories:** Infrared camera with lens, USB cable CVBS cable, Gift box.

DT-971H/DT-971S have compact structure, small size and light weight which are a solid durable product with high sensitivity, clarity images, precise measurement and flexible operation features. It can satisfy the demand of non-contact temperature measurement, fast fault detection and thermal field analysis in the field of industrial, electrical, electronics and other industries.

The leading end will complete all the image processing and temperature measurement then the analog video can output to a monitor directly. The video also can be viewed through the client network to realize the secondary temperature analysis by single-frame or continuous collection from the raw data.

#### Key Features:

- 100Mbps Ethernet;
- Wifi connection;
- Composite video output, PAL or NTSC;
- Standardized security interface design, using H.264 video compression protocol which is easy to system integration;
- Abundant interfaces, easy integration;
- 50Hz passive infrared imaging ensure the high frame rate security monitoring around the clock in all kinds of bad weather;
- With a variety of pseudo-color display;
- Image enhancement feature highlights the target details, easy to achieve target surveillance and recognition;
- Intelligent image filtering feature can reduce the image noise and improve the picture clarity;
- Automatic brightness contrast adjustment feature can adaptive adjust the brightness and contrast of the image based on the changing of the scene and object, so that the image is always in the best imaging results;
- Lenses: 7.5mm included, 22mm and 33mm optional;
- Powerful analysis feature, easy control operation;
- Support to record and playback the data stream temperature, perfect to reproduce historical scenes;
- Real-time image monitoring, temperature alarm is configurable.

#### Specifications

<b>Imaging and optical data</b>	
Field of view (FOV) / Minimum focus distance	29.8°x 22.6°/ 0.2m
Spatial resolution (IFOV)	3.33mrad
Thermal sensitivity/NETD	< 0.08°C @ +30°C (+86°F) / 80 mK
Image frequency	50Hz
Focus mode	Manual
Zoom	1-20× continuous, digital zoom
Focal length	7.5mm
Focal Plane Array (FPA) / Spectral range	Uncooled microbolometer / 8-14 μm
IR resolution	160 × 120 pixels
<b>Image presentation</b>	
Image modes	IR image only
Color palettes	IRON/Rainbow/Grey/GreyInverted/Sepia/Blue_Red/Hot_Cold/Humidity
<b>Measurement</b>	
Object temperature range	-20°C to +150°C (-4°F to +302°F) 0°C to +400°C (+32°F to +752°F)
Accuracy	±2°C (±3.6°F) or ±2% of reading
<b>Measurement analysis</b>	
Spot	Center Spot
Automatic hot/cold detection	Auto hot or cold markers
Isotherm	Detect high/low temperature/interval
Emissivity correction	Variable from 0.01 to 1.0
Measurement corrections	Emissivity, ambient temperature, distance, relative humidity, offset temperature
<b>Set-up</b>	
Set-up commands	Local adaptation of units, language, date and time formats, information of camera
Languages	multinational
<b>Data communication interfaces</b>	
Interfaces	USB-mini, composite video
USB	Data transform between camera and PC
Video out	Composite(PAL and NTSC)
Input voltage	DC 9V to 12V
<b>Ethernet</b>	
Ethernet type, connector type, video streaming	100Mbps, RJ-45, MPEG-4
Wi-Fi connectivity	Remote control and live video
<b>Alarm output</b>	
Alarm output	2 relay output
<b>Options Lens</b>	
11mm	FOV=20.6°x 15.5°
22mm	FOV=10.4°x 7.8°
33mm	FOV=6.9°x 5.2°



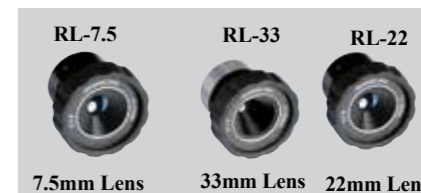
Model: 971S



Model: 971H

#### Applications

- Buildings, factories security monitoring;
- Border, ports, airports, railway stations and other big visitors flow rate places monitoring;
- Warehouse fire monitoring;
- Forest fire monitoring.



7.5mm Lens      33mm Lens      22mm Lens

**Size(HxWxD):** 90mmx74mmx74mm (971H)  
130mmx60mmx74mm(971S)

**Weight:** 1000g

**Accessories:** Infrared camera with lens, CVBS cable, RS485 cable, Network cable, Gift box.



32  
x  
31

IR resolution  
32x31 pixels

NETD  
0.15°C

Thermal sensitivity  
0.15°C (0.27°F)  
@ 1Hz and 100°C

9869 is a Professional InfraRed 32x31 pixels Imager Thermometer with 2.4" color TFT LCD display, 32x31 pixels Imagers & a microSD memory card for capturing images(JPEG) for viewing on your PC, providing fast, easy and accurate readings for most surface temperature measurements with bluetooth interface and cloud computing service. This product combines the convenience of an infrared thermometer with the visual advantage of a thermal imager creating a brand new tool category—a troubleshooting camera with infrared heat map.



20% visual

50% blend

80% blend

9869 combines the convenience of a digital camera with a thermal heat map at breakthrough affordability. The blended image eliminates guesswork and tells you the exact location of the issue.

Model: 9869



EMC  
EN: 61326-1  
EN: 61010-1



### Features

2.4" TFT 320x240 Pixels color LCD display  
IR temperature measurement with resolution 32x31 pixels  
Image Capture Frequency 9Hz, Thermal Sensitivity (NETD) ≤150 mK  
Hot Spot and Cold Spot Tracking, Adjustable emissivity from 0.10 to 1.00  
Visual Camera  
Images Capture(JPEG), MicroSD memory card,  
Date/time setup controls, Bluetooth interface  
Li-ION rechargeable battery  
Language selection: English, Chinese, French, German, Spanish  
Bluetooth interface to smartphone / PC.  
Meterbox IRTP & cloud service

### Specifications

Imaging and optical data	
Thermal sensitivity (NETD)	0.15°C (0.27°F) @ 1Hz and 100°C
Image frequency	9Hz
Detector data	
Detector type	Uncooled hyper-thin pyroelectric ceramic
Spectral range	8–14μm
IR resolution	32 × 31 pixels
IR temperature Measurement	
Object temperature range	–20°C to +180°C (–4°F to +356°F)
Accuracy	±2°C (±3.6°F) or ±2% of reading
Spotmeter	Center spot
Emissivity adjustable	0.10–1.0 Adjustable
Micro SD memory card	MAX. support 8GB
Field of View	20° X 20°
Color palettes	GRAY/GRAY IRON/ IRON/RAINBOW
Image storage format	Standard JPEG, including measurement data, on memory card > 1000 pictures

**Size(HxWxD):** 125mm x 58mm x 205mm

**Weight:** 494g

**Accessories:**

3.7V Li battery, Carrying case and Gift box

9868 is a Professional InfraRed 32x31 pixels Imager Thermometer with 2.2" color TFT LCD display, 32x31 pixels Imagers & a microSD memory card for capturing images(JPEG) for viewing on your PC, providing fast, easy and accurate readings for most surface temperature measurements with bluetooth interface and cloud computing service.

**Worldwide Patent:**

PCT/CN2010/000230

200910189276.8

200920261924.1



EMC  
EN: 61326-1  
EN: 61010-1

2.2" TFT Color LCD display

32x31 Pixels IR images

### Features

2.2" TFT 320x240 Pixels color LCD display  
IR temperature measurement with resolution 32x31 pixels  
Image Capture Frequency 9Hz  
Thermal Sensitivity (NETD) ≤150 mK  
Hot Spot and Cold Spot Tracking  
Visual Camera & Images Capture(JPEG)  
MicroSD memory card & datalogger function  
Dual laser targeting  
Date/time setup controls, Adjustable emissivity & trigger lock  
Li-ION rechargeable battery & Dual laser targeting  
USB interface, Bluetooth interface to smartphone / PC.  
Language selection: English, Chinese, French, German, Spanish  
Meterbox IRTP & cloud service

### Specifications

Imaging and optical data	
Thermal sensitivity (NETD)	0.15°C (0.27°F) @ 1Hz and 100°C
Image frequency	9Hz
Detector data	
Detector type	Uncooled hyper-thin pyroelectric ceramic
Spectral range	8–14μm
IR resolution	32 × 31 pixels
Display	2.2" TFT 320x240 pixels color LCD display
IR temperature Measurement	
Object temperature range	–20°C to +300°C (–4°F to +572°F)
Accuracy	±2°C (±3.6°F) or ±2% of reading
Spotmeter	Center spot
Emissivity adjustable	0.10–1.0 Adjustable
Micro SD memory card	MAX. support 8GB
Field of View	38° X 38°
Color palettes	GRAY/GRAY IRON/ IRON/RAINBOW
Image storage format	Standard BMP, including measurement data, on memory card > 1000 pictures

**Size(HxWxD):** 125mm x 58mm x 205mm

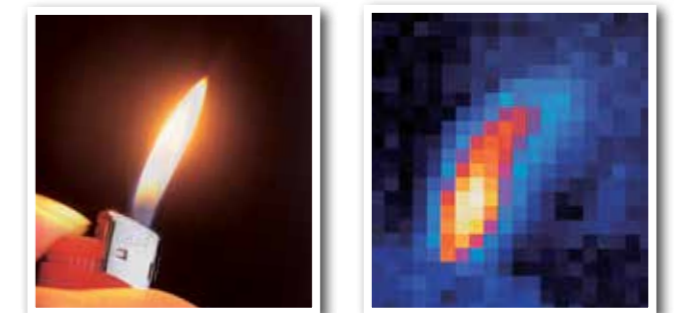
**Weight:** 494g

**Accessories:**

3.7V Li battery, USB cable,  
Carrying case and Gift box



Model: 9868





# Professional InfraRed Video Thermometers with TFT color LCD display & Imager Video format



Cloud Server



Worldwide Patent:  
PCT/CN2010/000230  
200910189276.8  
200920261924.1

EMC  
EN: 61326  
EN: 60825-1



Dual laser targeting & D.S = 75:1



JPG images / 3GP videos & Audio Recording



High accuracy (1.0%) measurement



Fold reading on the images

## Applications

- Plant/General Maintenance
- HVAC/R
- Transportation/Automotive
- Cooling and Reheating
- Serving areas
- Food service Equipment



2.2" TFT color LCD display



Support **Images**(JPEG) capture capabilities



Support **Video**(3GP) capture capabilities



Support **IR, K-Type, Air, Dewpoint, Wet bulb Temp. & Air Humidity** measurement

**Dual-laser** targeting

**Date/Time** setup controls

**USB** interface

**Data** Logger

Support **MicroSD** memory card extension



9860/9861/9862/9863/9865 Series Professional Infrared Video Thermometers with 2.2" color TFT LCD display & a microSD memory card for capturing images(JPEG) or video(3GP) for viewing on your PC, providing fast, easy and accurate readings for most surface temperature measurements. The measurement of dewpoint will be very visible for wet and dry proof. These serials products are with international patent and good hands for industrial measurements and data analyzing. The user can be back in office to analyze the measured Infrared temperature readings under the support of software.

Worldwide Patent:  
PCT/CN2010/000230  
200910189276.8  
200920261924.1

2.2" TFT Color LCD display

Capturing images(JPEG)  
75 : 1 distance to spot size

- High 75 : 1 / 50 : 1 distance to target ratio measures smaller surface areas at greater distances
- IR temperature measurement
- Air temperature and type K probe temperature measurement
- Relative humidity measurement
- Wet bulb temperature & dewpoint temperature measurement
- Unique flat surface, modern housing design

## Features

	9860/ 9860S	9861/ 9861S	9862/ 9862S	9863	9865
2.2" TFT 320x240 pixels Color LCD display	*	*	*	*	*
Camera pixels	640x480	640x480	640x480	3.0 Mega	3.0 Mega
Images(JPEG) & Video(3GP)	*	*	*	*	*
MicroSD memory card & datalogger function	*	*	*	*	*
Dual laser targeting	*	*	*	*	*
Date/time setup controls	*	*	*	*	*
Auto Power Off	*	*	*	*	*
High Temperature	*	*	*	*	*
Max, Min, DIF, AVG record	*	*	*	*	*
High and low alarm	*	*	*	*	*
Adjustable emissivity & Trigger lock	*	*	*	*	*
Type K input	*	*	*	*	*
USB/ bluetooth interface	USB	USB	USB	USB/ Bluetooth	USB/ Bluetooth
Readings memories	*	*	*	*	*
Humidity & Air Temperature	*	*	*	*	*
Dewpoint & Wet bulb temperature	*	*	*	*	*
Audio Recording	*	*	*	*	*
Language selection	English, Chinese, French, German, Spanish				

## Specifications

	9860/9860S	9861/9861S	9862/9862S	9863	9865
IR Temp. Range	-50°C to 1000°C -58°F to 1832°F	-50°C to 1600°C -58°F to 2912°F	-50°C to 2200°C -58°F to 3992°F	-50°C to 1000°C -58°F to 1832°F	-50°C to 2300°C -58°F to 4172°F
Response Time	Less than 300ms; Less than 150ms(9860S/9861S/9862S)				Less than 150ms
Resolution	0.1° up 1000°, 1° over 1000°				
Basic Accuracy (IR)	±1.0% of reading				
Optical Resolution	50:1 Distance to Spot size			75:1 Distance to Spot size	
Emissivity Adjustable	0.10-1.0 Adjustable				
Type K Temp. Range	-50°C to 1370°C / -58°F to 2498°F				
Basic Accuracy (TK)	±0.5% of reading ±1°C				
Micro SD memory card	MAX. support 8GB				
Air Temp Range	0 to 50°C/32 to 122°F				
Air Temp Basic Accuracy	±0.5°C/1°F				
Humidity Range	0 to 100%RH				
Humidity Basic Accuracy	±2.5%RH(20%-80%RH)				
Dew Point Temp. Range	0 to 50°C/32 to 122°F				
Wet Bulb Temp. Range	0 to 50°C/32 to 122°F				



**Size(HxWxD):** 125mm x 58mm x 205mm  
**Weight:** 494g  
**Accessories:**  
3.7V Li battery, Type K Temp. probe, USB cable, Carrying case and Gift box



Temperature probe  
( Optional: NR-31B / TP-500 / TCP-100 )



Model 9863



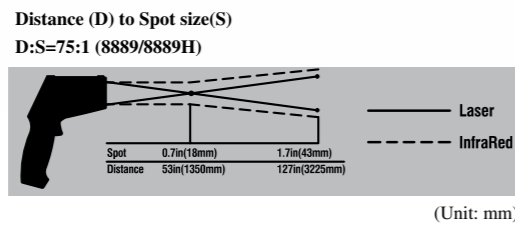


- 75: 1 distance to spot size
- Dual laser pointers
- 150ms faster sampling time
- 1% accuracy
- Reading memory



Adjustable Emissivity      Data Record      Fast measuring with high accuracy

- Features**
- Graphic white and black LCD display
  - Max, Min, DIF, AVG record & trigger lock
  - High / low alarm
  - Auto Power Off
  - Adjustable emissivity
  - Type K input
  - Memory data with Date/Time stamp (30 points)
  - USB interface
  - Datalog (Only 8879/8889H)
  - Wireless interface (Only 8879/8889H)



Model 8889/8889H



Thermistor clamp



TCP-100



Temperature probe  
(Optional: NR-31B / TP-500 / TCP-100)

Specifications	8878	8879	8889	8889H
IR Temp. Range	-50°C to 1200°C/ -58°F to 2192°F	-50°C to 1600°C/ -58°F to 2912°F	-50°C to 1850°C/ -58°F to 3362°F	-50°C to 2200°C/ -58°F to 3992°F
Response Time	Less than 150ms	Less than 150ms	Less than 150ms	Less than 150ms
Resolution	0.1° up 1000°, 1° over 1000°	0.1° up 1000°, 1° over 1000°	0.1° up 1000°, 1° over 1000°	0.1° up 1000°, 1° over 1000°
Basic Accuracy (IR)	±1.0% of reading	±1.0% of reading	±1.0% of reading	±1.0% of reading
Optical Resolution	50:1 Distance to Spot size	50:1 Distance to Spot size	75:1 Distance to Spot size	75:1 Distance to Spot size
Emissivity	Adjustable 0.10~1.0	Adjustable 0.10~1.0	Adjustable 0.10~1.0	Adjustable 0.10~1.0
Type K Temp. Range	-50°C to 1370°C/ -58°F to 2498°F	-50°C to 1370°C/ -58°F to 2498°F	-50°C to 1370°C/ -58°F to 2498°F	-50°C to 1370°C/ -58°F to 2498°F
Basic Accuracy (TK)	±0.5% of reading	±0.5% of reading	±0.5% of reading	±0.5% of reading
Readings memories	30	30	30	30
Datalog		*		*
Wireless interface(433Mhz)		*		*
Bluetooth interface				*

**Size(HxWxD):** 204mm x 155mm x 52mm      **Accessories:** 9V battery, USB Cable, Tripod, Software, Type-K temperature probe, Carrying case and Gift box  
**Weight:** 320g



8867H/8868/8868H/8869/8869H Series provide much faster, easy and accurate readings for most surface temperature measurements with Dual laser pointers.

Two laser points converge to a single spot when the unit is at the optimal distance from the object being measured.

- 150ms faster sampling time with 1% accuracy
- High 50 to 1 distance to target ratio measures smaller surface areas at greater distances
- Widest temperature range
- Unique flat surface, modern housing design
- Built-in dual laser pointers for accurate targeting
- Automatic Data Hold & Trigger Lock
- Max, Min, DIF, AVG record
- High and low alarm
- Emissivity Digitally adjustable from 0.10 to 1.0
- USB interface
- Compatible with all standard connector Type K thermocouples

**Features**

- User selectable °C or °F
- Dual Laser targeting
- Automatic Data Hold
- Auto Power Off
- White Backlit LCD Display
- Overrange indication
- High Temperature
- Max, Min, DIF, AVG record
- High / low alarm, Trigger lock
- Adjustable emissivity
- Reading memory (8868/8869/8868H/8869H)
- Type K input
- USB interface



Model 8869

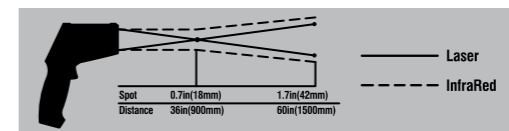
- 150ms faster sampling time
- 1% accuracy
- Reading memory

- 50 : 1 distance to spot size
- Dual laser pointers



EMC  
EN: 61326  
EN: 60825-1

**Distance (D) to Spot size(S)**  
D:S=50:1(8869)



**Specifications**

	8867H	8868	8869	8868H	8869H
IR Temp. Range	-50°C to 1650°C/ -58°F to 3002°F	-50°C to 1200°C/ -58°F to 2192°F	-50°C to 1600°C/ -58°F to 2912°F	-50°C to 1850°C/ -58°F to 3362°F	-50°C to 2200°C/ -58°F to 3992°F
Response Time	Less than 150ms	Less than 150ms	Less than 150ms	Less than 150ms	Less than 150ms
Resolution	0.1° up 1000°, 1° over 1000°	0.1° up 1000°, 1° over 1000°	0.1° up 1000°, 1° over 1000°	0.1° up 1000°, 1° over 1000°	0.1° up 1000°, 1° over 1000°
Basic Accuracy (IR)	±1.0% of reading	±1.0% of reading	±1.0% of reading	±1.0% of reading	±1.0% of reading
Optical Resolution	30:1 Distance to Spot size	50:1 Distance to Spot size	50:1 Distance to Spot size	50:1 Distance to Spot size	50:1 Distance to Spot size
Emissivity	Adjustable 0.10~1.0	Adjustable 0.10~1.0	Adjustable 0.10~1.0	Adjustable 0.10~1.0	Adjustable 0.10~1.0
Type K Temp. Range	-50°C to 1370°C/ -58°F to 2498°F	-50°C to 1370°C/ -58°F to 2498°F	-50°C to 1370°C/ -58°F to 2498°F	-50°C to 1370°C/ -58°F to 2498°F	-50°C to 1370°C/ -58°F to 2498°F
Basic Accuracy (TK)	±1.5% of reading	±1.5% of reading	±1.5% of reading	±1.5% of reading	±1.5% of reading
Readings memories		99	99	99	99

**Size(HxWxD):** 204mm x 155mm x 52mm      **Accessories:** 9V battery, USB Cable, Tripod, Software, Type-K temperature probe, Carrying case and Gift box  
**Weight:** 320g



# Professional InfraRed Thermometers with Multipoint Laser targeting



Fast response time 0.15 sec.

Built-in Multipoint Laser Pointers focus target (calibrated distance)  
High accuracy (1.0%) measurement

Triple LCD display indicates Infrared Temperature, Dew-point Temperature & Humidity readings.

Green, Red & Blue backlight: Normal, Higher & Lower temperature indications

Double molded housing design



### Applications

- Plant/General Maintenance
- HVAC/R
- Transportation/Automotive
- Cooling and Reheating
- Serving areas
- Food service Equipment
- Cold storage



● Multipoint laser pointers

8870/8871/8872/8873 Series compact Infrared Thermometers provide much faster and more accurate readings for Infrared Temperature, Dew-point Temperature & Humidity.

- 150ms faster sampling time
- 1% accuracy

- Dust and water-proof: IP54 rated for dust/water proof
- Rugged: 3 m (9.8 ft) drop tested
- Ergonomically designed: Completely redesigned for a more natural hand fit
- Distance to spot: Precise laser technology makes for more accurate and repeatable measurements
- Min/Max/Avg/Dif: Displays the minimum, maximum or average temperature, or the difference between two measurements
- Alarm: Hi and Lo alarms for rapid display of measurements outside the limits
- T-Sound: Changeable beeper indication by Temperature
- Green, Red & Blue backlight: Normal, Higher & Lower temperature indications
- Accurate readings for Infrared Temperature, Dew-point Temperature & Humidity.

### Features

	8870	8871	8872	8873
User selectable °C or °F	*	*	*	*
Multipoint laser targeting	*	*	*	*
Automatic Data Hold	*	*	*	*
Auto Power Off	*	*	*	*
White Backlit LCD Display	*	*	*	*
Overrange indication	*	*	*	*
Trigger lock for continuous use	*	*	*	*
Max/Min/Avg/Dif selectable	*	*	*	*
Adjustable Auto Power off Time	*	*	*	*
High and low alarm	*	*	*	*
Adjustable emissivity	*	*	*	*
Optical Resolution	12:1	16:1	20:1	30:1
Green, Red & Blue backlight : Normal, Higher & Lower temperature indications	*	*	*	*
Infrared Temperature, Dew-point Temperature & Humidity readings.	*	*	*	*

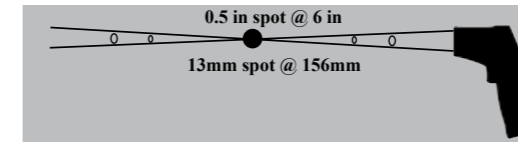
### Specifications

	8870	8871	8872	8873
IR Temp. Range	-50°C to 650°C -58°F to 1202°F	-50°C to 800°C -58°F to 1472°F	-50°C to 800°C -58°F to 1472°F	-50°C to 1000°C -58°F to 1832°F
IR Temp. Resolution	0.1° up to 1000°, 1° over 1000°			
Emissivity	Adjustable 0.10~1.0			
Basic Accuracy	±1.0% of reading			
Humidity	0~100%RH			
Humidity Accuracy	±2.5%RH(20%~80%RH)			
Dew Point Temp.	-30~100°C/ -22~199°F; Basic Accuracy: ±2.0% of reading			
Wet Bulb Temp.	-30~100°C/ -22~199°F; Basic Accuracy: ±2.0% of reading			
Response Time	Less than 150ms			
Spectral response	8-14µm			

**Size(HxWxD):** 146mm x 104mm x 43mm    **Accessories:** 9V battery, Carrying case and Gift box.  
**Weight:** 163g

**Distance (D) to Spot size(S)**

**D:S=12:1**



(Unit: mm)



Model 8870









Model 8873



EMC  
EN: 61326  
EN: 60825-1



# Professional InfraRed Thermometers with Dual Laser targeting

-  Fast response time 0.15 sec.
-   Built-in Dual Laser Pointers focus target (calibrated distance) High accuracy(1.0%) measurement
-   Triple LCD display indicates Reading, Max reading and Functions at same time. High contrast LCD with white backlight
-  Double molded housing design



8860B/8861B/8861/8862 Series compact Infrared Thermometers provide much faster and accurate readings for most surface temperature measurements. Two laser points converge to a single spot when the unit is at the optimal distance from the object being measured (8861B/8861/8862).

### Applications

- Plant/General Maintenance
- HVAC/R
- Transportation/Automotive
- Cooling and Reheating
- Serving areas
- Food service Equipment
- Cold storage

Worldwide Patent:  
PCT/CN2012/082197



- 150ms faster sampling time
- 1% accuracy

- Dual laser pointers



Model 8862MAX<sup>+</sup>



CE  
EMC  
EN: 61326  
EN: 60825-1

### Key Benefits

- T-Sound: Changeable beeper indication by Temperature
- Green, Red & Blue backlight: Normal, Higher & Lower temperature indications



Model 8862 series



Model 8863/8865

### Features

	8860B	8861B	8861	8862	8862MAX <sup>+</sup>	8863	8865
User selectable °C or °F	*	*	*	*	*	*	*
Dual laser targeting	Single laser	*	*	*	*	*	*
Automatic Data Hold	*	*	*	*	*	*	*
Auto Power Off	*	*	*	*	*	*	*
White Backlit LCD Display	*	*	*	*	*	*	*
Overrange indication	*	*	*	*	*	*	*
Trigger lock for continuous use			*	*	*	*	*
Max display	*	*	*	*	*	*	*
High and low alarm			*	*	*	*	*
Adjustable emissivity		*	*	*	*	*	*
Optical Resolution	12:1	12:1	12:1	12:1	20:1	20:1	30:1
Green, Red & Blue backlight: Normal, Higher & Lower temperature indications					*		
T-Sound: Changeable beeper indication by Temperature					*		

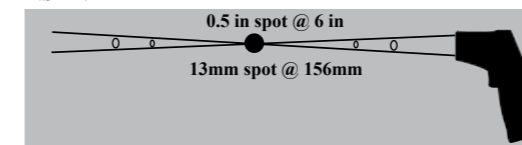
### Specifications

	8860B	8861B	8861	8862/8862MAX <sup>+</sup>	8863	8865
IR Temp. Range	-50°C to 450°C -58°F to 842°F	-50°C to 450°C -58°F to 842°F	-50°C to 550°C -58°F to 1022°F	-50°C to 650°C -58°F to 1202°F	-50°C to 800°C -58°F to 1472°F	-50°C to 1000°C -58°F to 1832°F
IR Temp. Resolution	0.1° up to 1000°, 1° over 1000°					
Emissivity	Fixed at 0.95			Adjustable 0.10-1.0		
Basic Accuracy	±1.0% of reading					
Response Time	Less than 150ms					
Spectral response	8-14µm					

Size(HxWxD): 146mm x 104mm x 43mm  
Weight: 163g

Accessories:  
9V battery, Carrying case and Gift box.

Distance (D) to Spot size(S)  
D:S=12:1



(Unit: mm)



Triple LCD display with white backlight



Accurate Measurement





Model 8862B



Model 8863B



Red backlight alert

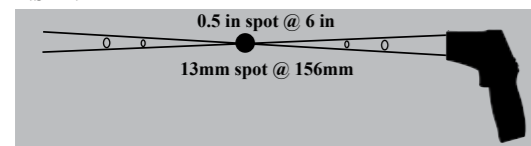


Triple LCD display with white backlight



Distance (D) to Spot size(S)

D:S=12:1



(Unit: mm)

- 150ms faster sampling time
- 1% accuracy

- Dual laser pointers
- Color backlight alert

8862B/8863B series Professional dual laser infrared thermometers with color alert is great for processes that require temperature control and monitoring, its white backlit dual LCD display will change to red when reading exceeds High or Low set points.

- High accurate measurements to 1.0%
- Measures up to 800°C (1472°F)
- Fast response time 0.15sec
- Max mode captures and holds rapidly changing temperature
- Lock function for continuous readings
- Adjustable emissivity increases measurement accuracy for different surfaces

**Features**

	8862B	8863B
User selectable °C or °F	*	*
Dual laser targeting	*	*
Automatic Data Hold	*	*
Auto Power Off	*	*
White Backlit LCD Display	*	*
Overrange indication	*	*
Trigger lock for continuous use	*	*
Max display	*	*
High and low alarm	*	*
Adjustable emissivity	*	*
Optical Resolution	12:1	20:1
Red backlight & beeper alarm	*	*

**Specifications**

	8862B	8863B
IR Temp. Range	-50°C to 650°C -58°F to 1202°F	-50°C to 800°C -58°F to 1472°F
IR Temp. Resolution	0.1° up to 1000°, 1° over 1000°	
Emissivity	Adjustable 0.10~1.0	
Basic Accuracy	±1.0% of reading	
Response Time	Less than 150ms	
Spectral response	8-14µm	

**Size(HxWxD):** 146mm x 104mm x 43mm

**Weight:** 163g

**Accessories:**

9V battery, Carrying case and Gift box.



820/821/822/ Series mini IR Thermometers provides non-contact temperature measurements: Food preparation, Safety and Fire inspectors, Plastic molding, Asphalt, Marine and Screen Printing, Measure ink and dryer temperature, Diesel and Fleet maintenance. Targeting objects are easy with the bright laser beam. Even in the dark, the display is easy to read with the quality backlight.

- Unique flat surface, mini modern housing design
- Temperature measurements from -40.0°C to 650°C/-40.0°F to 1202°F (822)
- Built-in laser pointer identifies target area
- Backlighting illuminates display for taking measurements at night or in areas with low background light levels
- Max / Min record
- Overrange indication
- Auto Data Hold when trigger released
- Auto Power Off



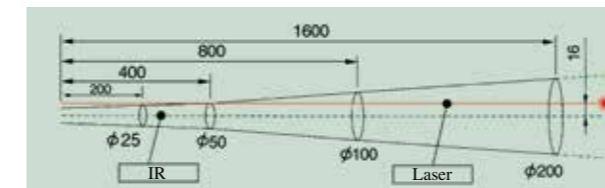
EMC  
EN: 61326  
EN: 60825-1

- Dual laser pointers

- 150ms faster sampling time
- 1% accuracy

Distance (D) to Spot size(S)

D:S=8:1



(Unit: mm)

**Features**

	820/821	822
User selectable °C or °F	*	*
Dual laser targeting	*	*
Automatic Data Hold	*	*
Auto Power Off	*	*
Negativity display	*	*
Overrange indication	*	*
Max / Min record	*	*
Bluetooth	*	*

**Specifications**

	820	821	822
Range	-40°C to 300°C/ -40°F to 572°F	-40°C to 500°C/ -40°F to 932°F	-40°C to 650°C/ -40°F to 1202°F
Basic Accuracy	±1.0% of reading or ±1.0°C/±2°F		
Resolution	0.1°C/°F		
Response Time	Less than 150 ms		
Optical Resolution	8:1 Distance to Spot size		20:1
Emissivity	Fixed at 0.95		

**Accessories:**

9V battery, Carrying case and Clamshell.

**Size(HxWxD):** 131mm x 96mm x 35mm

**Weight:** 130g



Model 820



Model 821



Model 822





Worldwide Patent:  
PCT/CN2012/082197



8662/8663 series Infrared Dewpoint Temperature Detectors are very visible for wet and dry proof. It's green LED light will change to yellow and red when reading close to Dewpoint Temperature. It provides faster sampling time and high accuracy, widely applicant in steel, oil & chemical, stove, environment testing, calibration Lab, gas production industry etc.

Features	8662	8663
User selectable °C or °F	*	*
Dual laser targeting	*	*
Automatic Data Hold	*	*
White Backlit LCD Display	*	*
Trigger lock for continuous use	*	*
Max display	*	*
Optical Resolution	12:1	20:1

Specifications	8662	8663
IR Temp. Range	-50°C to 260°C / -58°F to 500°F	-50°C to 380°C / -58°F to 716°F
IR Temp. Resolution	0.1°	
Emissivity	0.95	
Temp. Basic Accuracy	±1.0% of reading	
Response Time	Less than 150ms	
Spectral response	8-14µm	
Humidity	0~100%RH	
Humidity Accuracy	±2.5%RH(20%~80%RH)	
Dew Point Temp.	-30~100°C / -22~199°F; Basic Accuracy: ±2.0% of reading	
Wet Bulb Temp.	-30~100°C / -22~199°F; Basic Accuracy: ±2.0% of reading	

Size(HxWxD): 82mm x 58mm x 168mm  
Weight: 163g  
Accessories: 9V battery, Carrying case and Gift box.

Green LED Normal  
Yellow LED Close to Dewpoint  
Red LED Dewpoint

DT-8666/8666H Thermal Leak Detector with Audible Alarm



8666/8666H Thermal Leak Detector is visible for higher/lower temperature. It permits targeted scanning to find higher/lower temperature with continuous audible alarm.



Features	8666	8666H
Optical Resolution	10:1	20:1
Threshold for light color transition( off, 1°F, 5°F, 10°F)	*	
Auto-set base temperature for reference	*	
Single laser targeting	*	*
Fixed Emissivity at 0.95	*	*
°C / °F Switchable	*	*
Beeper alarm, Green, Red & Blue light alarm: Normal, Higher & Lower temperature indications	*	*

Specifications	8666	8666H
Temperature Range	-35 to 800°C/-31 to 1472°F	*
Temperature Range	-50 to 380°C/-58 to 716°F	*
Temperature accuracy	±1.0% of reading ±2 °C/°F	*
Response Wavelength range	8-14µm	*
Resolution	0.1°C/°F	*
Emissivity	Adjustable 0.10~1.0	Fixed at 0.95
Response Time	< 500ms	*

Size(HxWxD): 183mm x 131mm x 37mm  
Weight: 220g  
Accessories: 9V battery, Carrying case and Gift box.



- High accurate measurements to 1.0%
- Fast response time 0.5sec
- White Backlit LCD Display

Model 8666H

CE  
EMC  
EN: 61326  
EN: 60825-1



Worldwide Patent:  
PCT/CN2012/082197

8665 Infrared Temperature Finder is visible for higher/lower temperature. It permits targeted scanning to find higher/lower temperature with continuous audible alarm. It provides faster sampling time and higher accuracy, widely applicant in industrial and environment field.

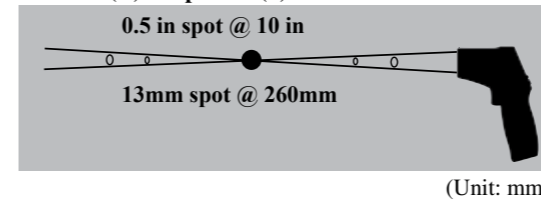
- Targeted scanning for higher/lower temperature
- The position of higher/lower temperature can be precisely found.
- Enables you to work with certainty for Fault diagnosis
- The Audible will alarm when temperature is changed with switchable audible of higher/lower temperature
- LCD display with new target graphics
- Easy keypad operation

Features
T-Sound: Changeable beeper indication by Temperature
User selectable °C or °F
Dual laser targeting
Automatic Data Hold
Auto Power Off
White Backlit LCD Display
Overrange indication
Trigger lock for continuous use
Max/Min display
20:1 distance to target ratio measures smaller surface areas at greater distances
Green, Red & Blue backlight: Normal, Higher & Lower temperature indications

Specifications	
IR Temp. Range	-50°C to 380°C -58°F to 716°F
IR Temp. Resolution	0.1°
Emissivity	Fixed at 0.95
Temp. Basic Accuracy	±1.0% of reading
Response Time	Less than 150ms
Spectral response	8-14µm



Distance (D) to Spot size(S) D:S=20:1



Size(HxWxD): 82mm x 58mm x 168mm  
Weight: 163g

Accessories: 9V battery, Carrying case and Gift box.



Model 8665

- 150ms faster sampling time
- 1% accuracy

• Dual laser pointers



Normal Temperature with Green LED indicator  
Higher temperature Located with Red LED indicator  
Lower temperature Located with blue LED indicator



EMC  
EN: 61326  
EN: 60825-1



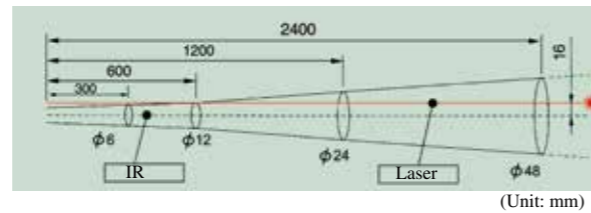




8838/8839/8858/8859/8859H Series provide fast, easy and accurate readings for most surface temperature measurements.

- 150ms faster sampling time with 1% accuracy (8859H)
- High 50 to 1 distance to target ratio measures smaller surface areas at greater distances
- Widest temperature range from -50.0 to 1600°C/-58.0 to 2912°F (8859/8859H)
- Unique flat surface, modern housing design
- Built-in laser pointer
- Automatic Data Hold
- Max, Min, DIF, AVG record
- High and low alarm
- Adjustable emissivity

Distance (D) to Spot size(S)  
D:S=50:1



Features	8838	8839	8858	8859	8859H
Optical Resolution (D:S)	30:1	50:1	50:1	50:1	50:1
High Temperature	1000°C/ 1832°F	1000°C/ 1832°F	1300°C/ 2372°F	1600°C/ 2912°F	1600°C/ 2912°F
User selectable °C or °F	*	*	*	*	*
Laser targeting	*	*	*	*	*
Automatic Data Hold	*	*	*	*	*
Auto Power Off	*	*	*	*	*
White Backlit LCD Display	*	*	*	*	*
Overrange indication	*	*	*	*	*
Max, Min, DIF, AVG record	*	*	*	*	*
High / low alarm, Trigger lock	*	*	*	*	*
Adjustable emissivity	*	*	*	*	*
150ms faster sampling time with 1% accuracy				*	*

Model 8839

50 : 1 distance to spot size

High Temperature  
1600°C (2912°F)

Model 8858

Model 8859

Specifications	8838	8839	8858	8859	8859H
Range	-50°C to 1000°C/ -58°F to 1832°F	-50°C to 1000°C/ -58°F to 1832°F	-50°C to 1300°C/ -58°F to 2372°F	-50°C to 1600°C/ -58°F to 2912°F	-50°C to 1600°C/ -58°F to 2912°F
Response Time	Less than 1 second	Less than 1 second	Less than 1 second	Less than 1 second	Less than 150 mS
Optical Resolution (D:S)	30:1	50:1	50:1	50:1	50:1
Resolution	0.1° up to 2000°, 1° over 2000°				
Basic Accuracy	±1.5% of reading or ±2°C/±4°F				
Emissivity	Adjustable 0.10-1.0				



Size(HxWxD): 220mm x 120mm x 56mm  
Weight: 290g

Accessories:  
9V battery, Carrying case and Gift box.



16 : 1 distance to spot size

High Temperature 1000°C (1832°F)



EMC  
EN: 61326  
EN: 60825-1

- High 16 to 1 distance to target ratio measures smaller surface areas at greater distances (8818H/8819H/8826H/8828H)
- Widest temperature range from -50.0 to 1000°C /-58.0 to 1832°F (8828/8829)
- Unique flat surface, modern housing design
- Built-in laser pointer
- Automatic Data Hold
- Max, Min, DIF, AVG record
- High and low alarm
- Adjustable emissivity
- 8818H/8819H/8826H/8828H Optical Resolution is 16:1 Distance to Spot size
- 8829 Optical Resolution is 50:1 Distance to Spot size

Features

	8818H/ 8818	8819H/ 8819	8826H/8828H /8828	8829
User selectable °C or °F	*	*	*	*
Laser targeting	*	*	*	*
Automatic Data Hold	*	*	*	*
Auto Power Off	*	*	*	*
Backlit LCD Display	*	*	*	*
Overrange indication	*	*	*	*
High Temperature			*	*
Max, Min, DIF, AVG record	*/-	*/-	*/*/-	*
High and low alarm	*/-	*/-	*/*/-	*
Adjustable emissivity	*/0.95	*/0.95	*/*/0.95	0.95
Trigger lock	*/-	*/-	*//*/-	*

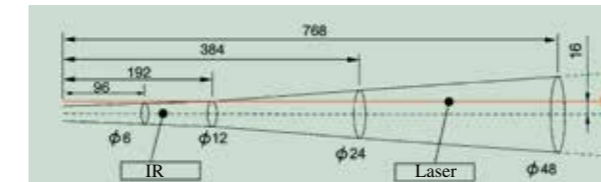
Specifications

	8818H/8818	8819H/8819	8826H	8828H/8828	8829
Range	-50°C to 550°C (-58°F to 1022°F)	-50°C to 750°C (-58°F to 1382°F)	-50°C to 900°C (-58°F to 1652°F)	-50°C to 1000°C (-58°F to 1832°F)	-50°C to 1000°C (-58°F to 1832°F)
Distance to Spot size	16:1 Distance to Spot size				50:1 Distance to Spot size
Emissivity	Adjustable 0.1~1.0 (8818H, 8819H, 8826H, 8828H)				Fixed at 0.95
Response Time	Less than 1 second				
Resolution	0.1° C/°F (8818H, 8819H, 8826H, 8828H); 0.1° up 200°, 1° over 200° (8818, 8819, 8828, 8829)				
Basic Accuracy	± 1.5% of reading or ± 2°C/± 4°F				

Size(HxWxD): 220mm x 120mm x 56mm  
Weight: 290g

Accessories:  
9V battery, Carrying case and Gift box

Distance (D) to Spot size(S)  
D:S=16:1



Model 8826H

Model 8828H

Model 8829



8855/8856 compact Infrared Thermometers provide fast, easy and accurate readings for most surface temperature measurements with Wireless USB Interface (RF 433MHz)

- 30 : 1 distance to spot size
- IR thermometer with type K temperature measurement

- Dual laser pointers(8856)
- Wireless USB Interface(RF 433MHz)
- 20 Points Memory

- Wireless USB Interface (RF 433MHz)
- High 30:1 distance to target ratio measures smaller surface areas at greater distances
- Widest temperature range from -50.0 to 1050°C (-58.0 to 1922°F)
- 150ms faster sampling time (8856 )
- Built-in dual laser pointers focus target for high accuracy measurement (8856)
- Built-in single laser pointers focus target for high accuracy measurement (8855)
- Analog output (8855)
- Automatic capture emissivity for targeting
- Unique flat surface, modern housing design
- Type K temperature measurement



Model 8856

**Applications**

- Plant/General Maintenance
- HVAC/R
- Transportation/Automotive
- Cooling and Reheating
- Serving areas
- Food service Equipment
- Cold storage



EMC  
EN: 61326  
EN: 60825-1



Large, easy-to-read LCD display with backlit

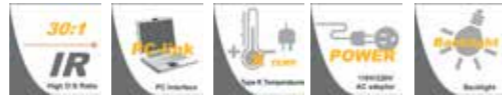
Analog output 1.0mV/°C or °F

Disinterrupted power

Type K temperature



**Accessories:**  
9V battery, Carrying case and Gift box, type K temperature probe, RF transmitter, power supply, tripod, PC Interface, CD Software.



**Features**

	8855/8856
User selectable °C or °F	*
Laser targeting	*
Automatic Data Hold	*
Auto Power Off	*
White Backlit LCD Display	*
Fast response time 0.15 sec.	8856
Trigger lock	*
Max, Min, DIF, AVG record	*
High and low alarm	*
Adjustable emissivity	*
Type K temperature measurement	*
High Temperature	1050°C/1922°F
Wireless USB Interface(RF 433MHz)	*
Optical Resolution (Distance to Spot size)	30:1

**Specifications**

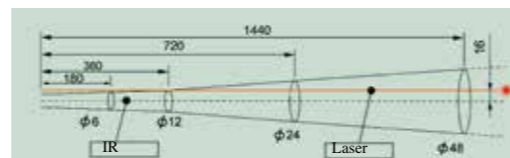
	8855/8856
IR Temp. Range	-50°C to 1050°C/ -58°F to 1922°F
IR Temp. Resolution	0.1° up to 2000°, 1° over 2000°
Optical Resolution	30:1 Distance to Spot size
Type K Temp. Range	-50°C to 1370°C/ -58°F to 2498°F
Type K Temp. Resolution	0.1° up to 2000°, 1° over 2000°
Response Time	Less than 150ms (8856)
Response Time	Less than 1 second (8855)
Basic Accuracy	±1.5% of reading
Emissivity	Adjustable 0.10~1.0

**Size(HxWxD):** 180mm x 106mm x 48mm

**Weight:** 250g

**Distance (D) to Spot size(S)**

D:S=30:1 (Unit: mm)



Worldwide Patent:  
PCT/CN2012/082197

810/811/812/813TS Series Low cost mini IR Thermometers provides non-contact temperature measurements: Food preparation, Safety and Fire inspectors, Plastic molding, Asphalt, Marine and Screen Printing, Measure ink and dryer temperature, Diesel and Fleet maintenance. Targeting objects are easy with the bright laser beam. Even in the dark, the display is easy to read with the quality backlit.

- Unique flat surface, mini modern housing design
- Temperature measurements from -50.0°C to 500°C/-58.0°F to 932°F (812)
- Built-in laser pointer identifies target area
- Backlighting illuminates display for taking measurements at night or in areas with low background light levels
- Max / Min record
- Overrange indication
- Auto Data Hold when trigger released
- Auto Power Off

**Features**

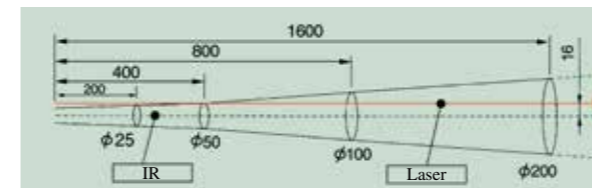
	810/811/812/813TS
User selectable °C or °F	*
Laser targeting	*
Automatic Data Hold	*
Auto Power Off	*
White Backlit LCD Display	*
Overrange indication	*
Max / Min record	*
Green, Red & Blue backlight: Normal, Higher & Lower temperature indications	813TS only
T-Sound: Changeable beeper indication by Temperature	813TS only

**Specifications**

	810	811	812/813TS
Range	-30°C to 260°C/ -22°F to 500°F	-30°C to 380°C/ -22°F to 716°F	-50°C to 500°C/ -58°F to 932°F
Basic Accuracy	±2% of reading or ±2°C/±4°F		
Resolution	0.1°C/°F		
Response Time	Less than 1 second		
Optical Resolution	8:1 Distance to Spot size		
Emissivity	Fixed at 0.95		

**Distance (D) to Spot size(S)**

D:S=8:1



(Unit: mm)

**Accessories:**

9V battery, Carrying case and Clamshell.

**Size(HxWxD):** 131mm x 96mm x 35mm

**Weight:** 130g

Model 810



Model 811/812



Model 813TS



**Key Benefits**

- T-Sound: Changeable beeper indication by Temperature
- Green, Red & Blue backlight: Normal, Higher & Lower temperature indications





Model 8801/8802



8801/8802 Low cost Compact IR Thermometer provides non-contact temperature measurements: Food preparation, Safety and Fire inspectors, Plastic molding, Asphalt, Marine and Screen Printing, Measure ink and dryer temperature, Diesel and Fleet maintenance. Targeting objects are easy with the bright laser beam. Even in the dark, the display is easy to read with the quality backlit scroll.

- Unique flat surface, mini modern housing design
- Temperature measurements from -50.0°C to 380°C/-58.0°F to 716°F(8802)
- Built-in laser pointer identifies target area
- Backlighting illuminates display for taking measurements at night or in areas with low background light levels
- Max / Min record
- Overrange indication
- Auto Data Hold when trigger released
- Auto Power Off



EMC  
EN: 61326  
EN: 60825-1

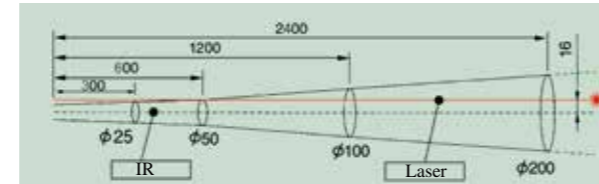
**Features**

	8801/8802
User selectable °C or °F	*
Laser targeting	*
Automatic Data Hold	*
Auto Power Off	*
White Backlit LCD Display	*
Overrange indication	*
Max / Min record	*

**Specifications**

	8801	8802
Range	-50°C to 330°C/ -58°F to 626°F	-50°C to 380°C/ -58°F to 716°F
Response Time	Less than 1 second	
Basic Accuracy	± 2% of reading or ±2°C/±4°F	
Optical Resolution	12:1 Distance to Spot size(calculated @90% energy)	
Emissivity	Fixed at 0.95	

**Distance (D) to Spot size(S)**  
D:S=12:1



(Unit: mm)

**Accessories:**  
9V battery, Carrying case and Gift box.

**Size(HxWxD):** 160mm x 82mm x 42mm  
**Weight:** 177g

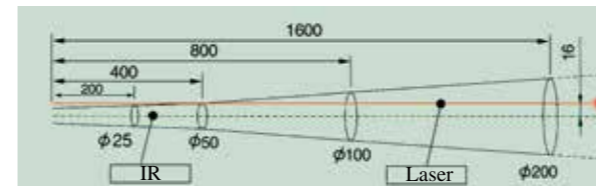


- Unique flat surface, mini modern housing design
- Backlighting illuminates display for taking measurements at night or in areas with low background light levels
- Overrange indication
- Auto Data Hold when trigger released
- Auto Power Off



EMC  
EN: 50081-1, 50082-1  
EN: 60825-1

**Distance (D) to Spot size (S)**  
D:S=8:1



(Unit: mm)

**Features**

	880H/880	882H/882	883H/883
User selectable °C or °F	*	*	*
Laser targeting	*	*	*
Automatic Data Hold	*	*	*
Auto Power Off	*	*	*
Backlit LCD Display	*	*	White Backlit
Overrange indication	*	*	*
Low battery indication	*	*	*
Wide range			*

**Specifications**

	880H	882H	883H
Range	-50°C to 500°C/ -58°F to 932°F	-50°C to 700°C/ -58°F to 1292°F	-50°C to 850°C/ -58°F to 1562°F
Basic Accuracy	±2% of reading or ±2°C/±4°F		
Resolution	0.1° up to 200°, 1° over 200°		
Response Time	Less than 1 second		
Optical Resolution	8:1 Distance to Spot size		
Emissivity	Fixed at 0.95		

**Accessories:**  
9V battery, Carrying case and Gift box.

**Size(HxWxD):** 160mm x 82mm x 42mm  
**Weight:** 177g

Model 882



Model 883



Model 883H





Model 8822



Wide range: -50°C~760°C/-58°F~1400°F

Worldwide Patent:  
PCT/CN2012/082197



8822/8823/8823TS Series Wide Range Mini IR Thermometers provide non-contact wide temperature measurements: Food preparation, Safety and Fire inspectors, Plastic molding, Asphalt, Marine and Screen Printing, Measure ink and dryer temperature, Diesel and Fleet maintenance. Targeting objects are easy with the bright laser beam. Even in the dark, the display is easy to read with the quality backlit scroll.

- Unique flat surface, mini modern housing design
- Wide range temperature measurements from -50.0°C to 760°C (-58.0°F to 1400°F)
- Built-in laser pointer identifies target area
- Backlighting illuminates display for taking measurements at night or in areas with low background light levels
- Overrange indication
- Auto Data Hold when trigger released
- Auto Power Off



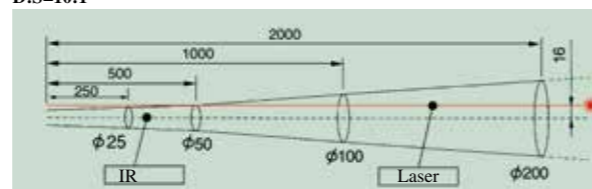
Model 8823TS

CE  
EMC  
EN: 61326  
EN: 60825-1

Features	8822	8823	8823TS
User selectable °C or °F	*	*	*
Laser targeting	*	*	*
Automatic Data Hold	*	*	*
Auto Power Off	*	*	*
White Backlit LCD Display	*	*	*
Overrange indication	*	*	*
Max / Min record	*	*	*
High Temperature		*	*
High and low alarm			*
T-Sound: Changeable beeper indication by Temperature (8823TS)			
Green, Red & Blue backlight: Normal, Higher & Lower temperature indications (8823TS)			

Specifications	8822	8823/8823TS
Range	-50°C to 550°C/ -58°F to 1022°F	-50°C to 760°C/ -58°F to 1400°F
Response Time	Less than 1 second	
Basic Accuracy	± 2% of reading or ±2°C/±4°F	
Optical Resolution	10:1 Distance to Spot size(calculated @80% energy)	
Emissivity	Fixed at 0.95	

Distance (D) to Spot size(S)  
D:S=10:1



(Unit: mm)

Size(HxWxD): 160mm x 82mm x 42mm  
Weight: 177g

Accessories:  
9V battery, Carrying case and Gift box.



Worldwide Patent:  
PCT/CN2012/082197



Model 8866TS



- 150ms faster sampling time
- 1% accuracy

- Dual laser pointers
- Large LCD display



EMC  
EN: 61326  
EN: 60825-1



8866/8866TS compact Infrared Thermometer provides much faster, easy, and accurate readings for most surface temperature measurements.

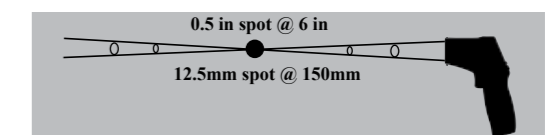
Two laser points converge to a single spot when the unit is at the optimal distance from the object being measured.

- 300ms quickest sampling time with 1% accuracy
- Built-in dual laser pointers
- Wide temperature range from -35.0 to 800°C (-31.0 to 1472°F)
- Adjustable emissivity from 0.10 to 1.0
- Unique flat surface, modern housing design

Features	8866/8866TS
User selectable °C or °F	*
Dual laser targeting	*
Automatic Data Hold	*
Auto Power Off	*
White Backlit LCD Display	*
Overrange indication	*
Trigger lock	*
Max / Min display	*
High and low alarm	*
Adjustable emissivity	*
High Temperature	800°C/1472°F
Optical Resolution (Distance to Spot size)	12:1
Green, Red & Blue backlight: Normal, Higher & Lower temperature indications	8866TS
T-Sound: Changeable beeper indication by Temperature	8866TS

Specifications	8866/8866TS
IR Temp. Range	-35°C to 800°C/ -31°F to 1472°F
IR Temp. Resolution	0.1°C/°F
Optical Resolution	12:1 Distance to Spot size
Emissivity	Adjustable 0.10-1.0
Basic Accuracy	±1.0% of reading
Response Time	Less than 300ms
Spectral response	8-14µm

Distance (D) to Spot size(S)  
D:S=12:1



(Unit: mm)

Size(HxWxD): 160mm x 82mm x 42mm  
Weight: 177g

Accessories:  
9V battery, Carrying case and Gift box





Model 8830

8830/8831/8832/8833 compact Infrared Thermometers provide fast, easy, and accurate readings for most surface temperature measurements with Type K Input and 20 Points Memory

- IR Thermometer with Type K Input and 20 Points Memory
- Widest temperature range from -50.0 to 800°C (-58.0 to 1472°F)
- Unique flat surface, modern housing design
- Built-in laser pointer
- Type K temperature measurements
- Automatic capture emissivity for targeting
- Automatic Data Hold
- Max, Min, DIF, AVG record
- High and low alarm
- Adjustable emissivity



● 13 : 1 distance to spot size

- IR Thermometer with Type K Input and 20 Points Memory
- Automatic capture emissivity for targeting

Features	8830	8831	8832	8833
User selectable °C or °F	*	*	*	*
Laser targeting	*	*	*	*
Automatic Data Hold	*	*	*	*
Auto Power Off	*	*	*	*
White Backlit LCD Display	*	*	*	*
Overrange indication	*	*	*	*
Trigger lock	*	*	*	*
Max, Min, DIF, AVG record	*	*	*	*
High and low alarm	*	*	*	*
Adjustable emissivity	*	*	*	*
Type K temperature measurements	*	*	*	*
Max. Temperature	380°C/716°F	480°C/896°F	580°C/1076°F	800°C/1472°F
Optical Resolution	13:1			

Specifications	8830	8831	8832	8833
IR Temp. Range	-32°C to 380°C -25.6°F to 716°F	-32°C to 480°C -25.6°F to 896°F	-32°C to 580°C -25.6°F to 1076°F	-50°C to 800°C -58°F to 1472°F
Optical Resolution	13:1			
IR Temp. Resolution	0.1°C/°F			
Type K Temp. Range	-50°C to 1370°C/-58°F to 2498°F			
Type K Temp. Resolution	0.1° up to 2000°, 1° over 2000°			
Response Time	Less than 1 second			
Basic Accuracy	±1.5% of reading			
Emissivity	Adjustable 0.10~1.0			

Size(HxWxD): 180mm x 106mm x 48mm  
Weight: 250g



EMC  
EN: 61326  
EN: 60825-1



Temperature probe  
(Optional: NR-31B / TP-500 / TCP-100)



Thermistor clamp

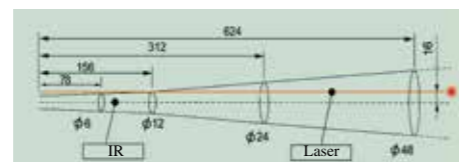


TCP-100

**Applications**

- Plant/General Maintenance
- HVAC/R
- Transportation/Automotive
- Cooling and Reheating
- Serving areas
- Food service Equipment
- Cold storage

Distance (D) to Spot size(S)  
D:S=13:1 (Unit: mm)



Model 8831



Model 8832

Accessories:  
9V battery, Carrying case, clamshell and type K temperature probe

- IR Thermometer with Type K Input and 20 Points Memory
- Automatic capture emissivity for targeting

Worldwide Patent:  
PCT/CN2012/082197



● 30 : 1 distance to spot size

8833H/8835/8835TS compact Infrared Thermometers provide fast, easy, and accurate readings for most surface temperature measurements with Type K Input and 20 Points Memory

- IR Thermometer with Type K Input and 20 Points Memory
- High 30:1 distance to target ratio measures smaller surface areas at greater distances
- Widest temperature range from -50.0 to 1050°C (-58.0 to 1922°F)
- Unique flat surface, modern housing design
- Built-in laser pointer
- Type K temperature measurement
- Automatic capture emissivity for targeting
- Automatic Data Hold
- Max, Min DIF, AVG record
- High and low alarm
- Adjustable emissivity



EMC  
EN: 61326  
EN: 60825-1



Model 8833H/8835

Features	8833H	8835/8835TS
User selectable °C or °F	*	*
Laser targeting	*	*
Automatic Data Hold	*	*
Auto Power Off	*	*
White Backlit LCD Display	*	*
Overrange indication	*	*
Trigger lock	*	*
Max, Min, DIF, AVG record	*	*
High and low alarm	*	*
Adjustable emissivity	*	*
Type K temperature measurements	*	*
High Temperature	850°C/1562°F	1050°C/1922°F
Optical Resolution	30:1	30:1
Green, Red & Blue backlight: Normal, Higher & Lower temperature indications (8835TS)		
T-Sound: Changeable beeper indication by Temperature (8835TS)		

Specifications	8833H	8835/8835TS
IR Temp. Range	-50°C to 850°C/ -58°F to 1562°F	-50°C to 1050°C/ -58°F to 1922°F
Optical Resolution	30:1	
IR Temp. Resolution	0.1°C/°F	
Type K Temp. Range	-50°C to 1370°C/-58°F to 2498°F	
Type K Temp. Resolution	0.1° up to 2000°, 1° over 2000°	
Response Time	Less than 1 second	
Basic Accuracy	±1.5% of reading	
Emissivity	Adjustable 0.10~1.0	

Size(HxWxD): 180mm x 106mm x 48mm  
Weight: 250g  
Accessories:  
9V battery, Carrying case, clamshell and type K temperature probe



Temperature probe  
(Optional:NR-31B / TP-500 / TCP-100)



Thermistor clamp



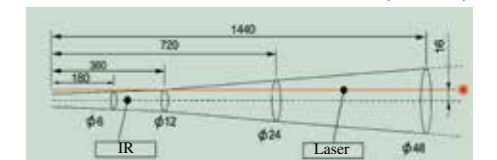
TCP-100



Model 8835TS



Distance (D) to Spot size(S)  
D:S=30:1 (Unit: mm)







Model IR-230A

Model IR-230B

Model IR-230C

The online Infrared Temperature sensor provides the advantages of infrared temperature measurement in a compact, designed to measure target temperature stability of production line.

Specifications	230A	230B	230C
Output	10mV/°C	0 ~5V	4 ~20mA
Temperature range	0 to 230°C (32 to 446°F)	0 to 230°C (32 to 446°F)	0 to 230°C (32 to 446°F)
Distance to spots	4:1	4:1	4:1
Sampling time	500ms(95%)	500ms(95%)	500ms(95%)
Spectral	8~14μm	8~14μm	8~14μm
Accuracy	+/-1%	+/-1%	+/-1%
Emissivity	Fixed at 0.95	Fixed at 0.95	Fixed at 0.95

**Size(HxWxD):** 85mm x Φ12mm **Weight:** 50g

**Accessories :**  
Cable and Gift box .

### Features

User selectable °C or °F	*
Automatic Data Hold	*
Auto Power Off	*
Low battery indication	*
Set Min, Max, Lock	*

### Specifications

Range	-35°C~900°C/ -31°F~1652°F
Response Time	Less than 500ms
Resolution	0.1°C/°F
Basic Accuracy	±1.5% or ±2°C/±4°F
Optical Resolution	50:1 Distance to Spot size
Emissivity	0.1 ~ 1.0 (adjustable)
Power	230 VAC (±10%), 0.1 A, switchable 50/60 Hz or 12 ~24 DCV

**Size(HxWxD):** 71mm x 71mm x 87mm

**Weight:** 268g

**Accessories :**  
Stand, Cable and Gift box .



EMC  
EN: 61326  
EN: 60825-1

Model IR-91



## IR-91 Panel InfraRed Thermometer

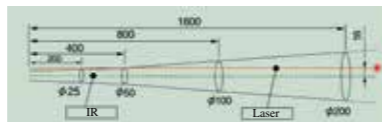
## IR-82 InfraRed Thermometer Probe

- 8:1 Distance to Spot size ratio
- Built-in laser pointer
- Built-in Analog output of 1 mV/°C or °F & °C/°F switchable
- Compatible with multimeters, clamp meters, oscilloscope and industrial applications etc
- Ideal for applications where object being measured cannot be touched
- Provides instant , highly repeatable readings & Low battery indication



EMC  
EN: 61326  
EN: 60825-1

**Distance (D) to Spot size(S)**  
**D:S=8:1**



(Unit: mm)

### Specifications

Range	-35°C~550°C/ -31°F~1022°F
Response Time	Less than 500ms
Resolution	1mV/°C or °F
Basic Accuracy	±2% or ±2°C/±4°F
Optical Resolution	8:1
Emissivity	Fixed at 0.95
Battery	9V

**Size(HxWxD):** 166mm x 53mm x 40mm

**Weight:** 189g

**Accessories :**  
9V battery, Clamshell



Model IR-82



BX-350/BX-500 portable IR calibrators are used for calibrating long distance Infrared Thermometer, which are designed as handhold and small calibrators.

- Easily certify IR pyrometers to 500°C/932°F (BX-500)
- Large 2.25" (57 mm) blackbody target
- RTD (Resistance Thermometer detector) reference well for high precision



EMC  
EN: 61326

### Specifications

	BX-350	BX-500
Temperature	50°C ~ 350°C	50°C ~ 500°C
Range	(122°F ~ 662°F)	(122°F ~ 932°F)
Accuracy	±0.5°C @ 100°C (±1.0°F @ 212°F) ±1.2°C @ 350°C (±2.4°F @ 662°F)	±0.5°C @ 100°C (±1.0°F @ 212°F) ±1.8°C @ 500°C (±3.6°F @ 932°F)
Stability	±0.1°C @ 100°C (±0.2°F @ 212°F) ±0.2°C @ 350°C (±0.4°F @ 662°F)	±0.1°C @ 100°C (±0.2°F @ 212°F) ±0.3°C @ 500°C (±0.6°F @ 932°F)
Target size	2.25" (57mm)	2.25" (57mm)
Target Emissivity	0.95	0.95
Resolution	0.1°C/°F	0.1°C/°F
Heating Time	30 minutes to max	40 minutes to max
Cooling Time	30 minutes max to 100°C	45 minutes max to 100°C
Power	230 VAC (±10%), 1.5 A; or 110V AC, 3A	



Model BX-350

Whether you're using in-line or handheld infrared pyrometers, you need a high performance calibration standard to verify accuracy. Portable IR Calibrator provides a stable blackbody target for calibrating non-contact IR thermometers up to 500°C (BX-500).

The portable IR calibrator features a large temperature controlled blackbody target with a diameter of 2.25" (57 mm), which offers a wide field of view area for optical variations in IR thermometers. With an emissivity of 0.95, the isothermal target can be controlled in set-point increments of 0.1° from 50°C to 500°C (BX-500).

For even higher precision, a contact calibration well is located directly behind the blackbody surface. Using an optional digital RTD thermometer and calibrated secondary probe, accuracies of ±0.1°C can be achieved.

**Size(HxWxD):** 180mm x 114mm x 233mm

**Weight:** 2682g

**Accessories:** Carton box, AC power cable.



## BX-150 Dry-Well Temperature Calibrator

The new heat source to check your thermometer's accuracy up to 300°C/572°F. Simply set the heat source to the desired test point, insert the test probe into the best fitting well, and get a verification of the performance. It's that easy!

### Specifications

Range	33°C to 300°C (91.4°F to 572°F)
Resolution	0.1°C/°F
Accuracy	±0.5°C (33 to 199°C) & ± 1°C (200 to 300°C) ±0.9°F (91.4 to 390.2°F) & ± 1°F (392 to 572°F)
Stability	±0.5°C
Heating Time	ambient to 300°C (572°F) after 10 minutes
Cooling Time	300°C (572°F) to 100°C (212°F) after 10 minutes
Stabilization	5 minutes
Well Depth	4" (100mm)
Power	230/115 volts



Model BX-150

**Size(HxWxD):** 180mm x 114mm x 233mm

**Weight:** 2200g

**Accessories:** Box, AC power cable.





The IR-95 Food Safety infrared and contact thermometer for surface scans with a probe thermometer and alarm monitoring for internal temperature readings.

Features	
Built-in fold-out probe for measuring internal food temperatures	
Probe temperature range -40 to 230 °C	
Countdown timer to monitor cooking, cooling and HACCP exposure times	
Backlit display for clear readings in poorly lit areas	
MIN/MAX temperature display for quick reference	
IP65 waterproof	
Mini modern housing design	
Flash light	

Specifications	
IR Temp. Range	-40°C to 280°C/-40°F to 536°F
Response Time	Less than 500ms
Optical Resolution	4:1 Distance to Spot size
Emissivity	Fixed at 0.95
Thermistor Temperature Range	-40°C to 230°C/-40°F to 446°F
Resolution	0.1°C/°F
Basic Accuracy	±1.0% of reading



**Size(HxWxD):** 50mm x67mm x 185mm  
**Weight:** 180g  
**Accessories:**  
2X1.5V "AAA" batteries, Clamshell.

The 161 is a waterproof folding thermometer which offers handy, practical and strong support when carrying out temperature measurements. The thermometer features IP67 class protection and can be used under all conditions. It can also be easily cleaned under running water and has a rubber-coated surface for non-slip handling. The 161 has a large, illuminated display for easy and error-free viewing of measurement data under poor lighting conditions.

- Compact 5.9" size (15 cm)
- Ideally suited to core temperature measurements
- IP67 protection
- Non-slip rubber coated surface
- Large, illuminated readout display
- ABS/TPE/Metal housing



EMC  
EN: 61326  
EN: 13485  
EN: 60825-1

Features	
Measuring temperature range	-50 to 290°C / -58 to 554°F
Accuracy	±1°C / ±1.8°F (-50°C to -30°C / -58 to -22°F) ±0.5°C / ±0.9°F (-30°C to 120°C / -22 to 248°F) ±1°C / ±1.8°F (120°C to 200°C / 248 to -392°F) ±2°C / ±3.6°F (200°C to 290°C / 392 to -554°F)
Resolution	0.1°C / 0.1°F
Battery	2 x1.5V "AAA" batteries / 800 hr battery life
Material/Housing	ABS

**Size(HxWxD):** 150mm x 45mm x 20mm  
**Weight:** 50g  
**Accessories :**  
2 x1.5V "AAA" batteries, Clamshell



Probe is suitable for various field test



Solid metal surface



Compact size



IP67 waterproof



The Food Safety infrared non-contact thermometer for surface scans with a probe thermometer for internal temperature readings. An integrated countdown timer with alarm monitors line checks as well as cooking and cooling intervals.

Features	
Built-in fold-out probe for measuring internal food temperatures	
Probe temperature range -40 to 200 °C	
Countdown timer to monitor cooking, cooling and HACCP exposure times	
Backlit display for clear readings in poorly lit areas	
MAX temperature displayed for quick reference	

Specifications	
IR Temp. Range	-40°C to 280°C/-40°F to 536°F
Response Time	Less than 500ms
Optical Resolution	4:1 Distance to Spot size
Emissivity	Fixed at 0.95
Thermistor Temperature Range	-40°C to 200°C/-40°F to 392°F
Resolution	0.1°C/°F
Basic Accuracy	±1.0% of reading

**Size(HxWxD):** 50mm x67mm x 185mm  
**Weight:** 180g  
**Accessories:**  
9V battery, Clamshell.







EMC  
EN: 61326  
EN: 60825-1

HACCP approved

162/163 professional wireless BBQ thermometer measures the core temperature of grilled food, transmits it wirelessly to a portable display, signals its doneness and gives an acoustic and visual alarm when the cooking time is about to be exceeded. A temperature probe measures the temperature of the grilled or pan-fried food, while the transmitter sends the data to the portable receiver over a distance of up to approx. 30m. The receiver features an acoustic voice output in five languages. The temperature can be displayed in °C or °F. The stainless steel temperature probe can be disassembled from the transmitter for easy cleaning.

162 BBQ thermometer is with single measuring probe.  
163 BBQ thermometer is with dual measuring probes.



Model: 163

Features	162	163
Food and cooking temperature of the wireless transmission functions	*	*
Dual probe measurement		*
Multi-LED indicate the food temperature	*	
Temperature and Time gauge alarm functions	*	*
Food type and taste level selection	*	*
Food, temperature and time display	*	*
°C/°F temperature selection	*	*
Backlight function	*	*

Specification	
Temperature range	-40 to 230°C / -40 to 446°F
Temperature accuracy	±1% ±1°C / ±1% ±1.8°F
Transmitter range	30m
Power supply	2*1.5AAA

Size(HxWxD): 150mm x 45mm x 20mm

Weight: 50g

Accessories : 2 x 1.5V "AAA" batteries, Clamshell



Model: 162



EMC  
EN: 61326  
EN: 60825-1

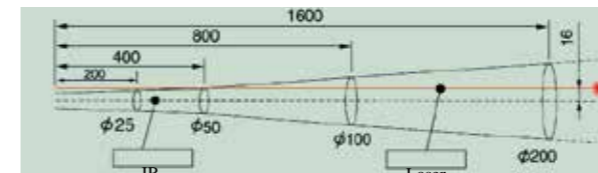
HACCP approved (IR-93)

IR-92/93 Series The Non-contact Infrared Thermometers can be used to measure the temperature of objects' surface that is improper to be measured by traditional (contact) thermometer (such as moving object, the surface with electricity current or the objects which are uneasy to be touched.)

- Unique flat surface, mini modern housing design
- Temperature measurements from -35.0°C to 300°C/-31.0°F to 572°F
- Built-in laser pointer identifies target area
- Backlighting illuminates display for taking measurements at night or in areas with low background light levels
- Overrange indication
- Auto Data Hold when trigger released
- Auto Power Off

Distance (D) to Spot size(S)

D:S=8:1



(Unit: mm)



Model: IR-93

Features	IR-92	IR-93
User selectable °C or °F	*	*
Laser targeting	*	*
Automatic Data Hold	*	*
Auto Power Off	*	*
Overrange indication	*	*
For food		*

Specifications	IR-92	IR-93
Temperature Range	-18 to 300°C / 0 to 572 °F	-35 to 300°C / -31 to 572 °F
D:S	8:1	6:1
Temperature accuracy	±3.6 °F (2°C) or ±2% of reading	Blow 39°F (4°C) ±3.6°F (2°C) 39 to 150°F (4 to 65°C) ±2°F (1°C) Above 149°F (65°C) ±(1%+2°F(1°C)) of reading.
Response Wavelength range	8-14um	
Resolution	0.1	
Emissivity	Fixed at 0.95	Fixed at 0.97
Response Time	About 150ms	
Laser wavelength	630-660nm	
Laser class	Class 2	
Data hold	Yes	
°C / °F Switchable	Yes	
Low power indication	Yes	
Auto turn off	About 7 sec.	
Operating temp.	0 to 50°C (32 to 122 °F)	
Storage temp.	-10 to 60°C (-4 to 140 °F)	
Relative humidity	10%~90%RH operating, <80%RH storage	
Power supply	9V battery, NEDA 1604A or IEC 6LR61, or equivalent	

Size(HxWxD): 186mm x45mm x 38mm

Weight: 190g

Accessories:

9V battery, Clamshell.



Model: IR-92



EMC  
EN: 61326  
EN: 60825-1



**Features**

- User selectable °C or °F
- Data Hold & Auto Power Off
- Overrange indication
- Max, Min record
- IR with probe temperature



EMC  
EN: 61326  
EN: 60825-1

**Specifications**

IR Temp. Range	-35°C to 260°C/ -31°F to 500°F
IR Temp. Resolution	0.1°C/°F
Optical Resolution	1:1 Distance to Spot size
Emissivity	Adjustable 0.10~1.0
Thermistor Temperature Range	-40°C to 260°C/ -40°F to 500°F
Resolution	0.1°C/°F
Response Time	Less than 1 second
Basic Accuracy	±2% of reading

Model IR-96



2 in 1 IR Thermometer with thermistor probe



Size(HxWxD): 140mm x 42mm x 25mm

Weight: 80g

Accessories:

CR2032 Button battery, Clamshell.

**DT-880B Food Thermometer with Red/Green LED indication**

- High Accuracy for food temperature measurement.
- Set alarm & Sound alarm if temperature is exceeded.
- Digital LCD display with backlit.
- Data displayed in Celsius or Fahrenheit.
- Auto power off (energy saver).
- Small, convenient, easy to use.

Size(HxWxD): 160mm x 82mm x 42mm

Weight: 177g

Accessories:

9V battery, Carrying case and Gift box.



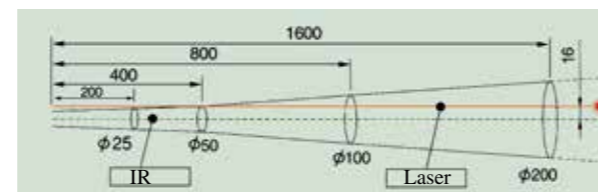
Model 880B

**Specifications**

Surface Temp.range	-50.0 to 200°C(-58°F to 392°F)
Basic Accuracy	±0.3°C/±0.6°F at 30°C~40°C/ 86°F~104°F Range
Optical Resolution	8:1 Distance to Spot size
Resolution	0.1° C/F
Response Time	Less than 1 second
Emissivity	Fixed at 0.95

Distance (D) to Spot size (S)

D:S=8:1



(Unit: mm)



- IP rating 67
- Easy to use
- LCD screen shows readings in Fahrenheit or Celsius
- Compact size design

**Features**

- User selectable °C or °F
- Automatic Data Hold
- Auto Power Off
- Low battery indication
- Fast sampling time 300ms
- Preseve the original taste, aroma and color of your wine
- Automatic vacuum sealing opened wines in seconds
- Easy-to-read lcd display indicating wine temperature, sealing status and counts the days.
- No-slip, no-scratch soft touch grip
- Continuous air pressure detection and auto re-pump of air

**Specifications**

Range	-35°C~-100°C/-31°F~-212°F
Basic Accuracy	±1.5% or ±1.5°C/±3°F
Optical Resolution	8:1
Resolution	0.1°C/°F
Emissivity	Fixed at 0.95

Size: 100mm x 25mm

Weight: 33g

Accessories :

Two LR44(1.5V) button batteries, Clamshell

HACCP approved

1.5% Accuracy

300ms faster sampling time



EMC  
EN: 61326  
EN: 60825-1



Model IR-69



- 300ms quickest sampling time with 1.5% accuracy (IR-65B)
- Easy to use : hold it within two feet of the area to be measured and push the button
- Large LCD screen shows readings in Fahrenheit or Celsius
- Range: -35 to 250°C/-31 to 482°F (IR-65B)
- Compact size design for the ultimate in convenience and portability
- World smallest & IP rating 67 (IR-67/67B)

1.5% Accuracy (IR-65B)

Model IR-65



EMC  
EN: 61326  
EN: 60825-1

Features	IR-65	IR-65B	IR-67	IR-67B
User selectable °C or °F	*	*	*	*
Automatic Data Hold	*	*	*	*
Auto Power Off	*	*	*	*
Low battery indication	*	*	*	*
Lock function	*	*	*	*
Set Min, Max	*	*	*	*
Fast sampling time	<1s	300ms	<1s	<1s
Housing material	Plastic	Plastic	Plastic	Metal
High accuracy		1.5%		1.5%

Specifications	IR-65	IR-65B	IR-67	IR-67B
Range	-35°C~230°C/ -31°F~446°F	-35°C~250°C/ -31°F~482°F	-35°C~230°C/ -31°F~446°F	-35°C~250°C/ -31°F~482°F
Response Time	Less than 1 second	Less than 1 second	Less than 1 second	Less than 1 second
Basic Accuracy	±2% or ±2°C/±4°F	±1.5% or ±2°C/±4°F	±2% or ±2°C/±4°F	±1.5% or ±2°C/±4°F
Optical Resolution	1:1			
Emissivity	Fixed at 0.95	0.1 to 1 (adjustable)	Fixed at 0.95	
Resolution	0.1°C/°F			

Size: 80mm x 40mmx25mm (IR-65/65B)

100mm x 25mm(IR-67/67B)

Weight: 36g (IR-65/65B) 33g(IR-67/67B)

Accessories : One CR2032 button battery & Clamshell (IR-65/65B)

Two LR44(1.5V) button batteries, Clamshell (IR-67/67B)



World smallest



≤100°C Green backlit



>100°C Red backlit



Model IR-67B

**Features**

	IR-66	IR-66B
User selectable °C or °F	*	*
Automatic Data Hold	*	*
Auto Power Off	*	*
Low battery indication	*	*
Lock function	*	*
Set Min, Max	*	*
Fast sampling time	<1s	300ms
High accuracy		1.5%

**Specifications**

	IR-66	IR-66B
Range	-35°C~230°C/ -31°F~446°F	-35°C~250°C/ -31°F~482°F
Response Time	Less than 1second	Less than 300ms
Basic Accuracy	±2% or ±2°C/±4°F	±1.5% or ±2°C/±4°F
Optical Resolution	1:1	
Resolution	0.1°C/°F	
Emissivity	Fixed at 0.95	

Size(HxWxD): 75mm x 40mm x 20mm

Weight: 33g

Accessories :

One CR2032 button battery, Carrying Case & Clamshell

- 300ms quickest sampling time with 1.5% accuracy (IR-66B)
- Easy to use : hold it within two feet of the area to be measured and push the button
- Large LCD screen shows readings in Fahrenheit or Celsius
- Range: -35 to 250°C/-31 to 482°F
- Compact size design for the ultimate in convenience and portability

1.5% Accuracy (IR-66B)

300ms faster sampling time (IR-66B)



EMC  
EN: 61326  
EN: 60825-1



Model IR-66



Model IR-66B

**IR-77H/88/88H series Pocket InfraRed Thermometers with Laser Pointer**

The IR-77H/88/88H series Pocket InfraRed Thermometers are new models designed with lower cost. Check all types of A/C and heating systems. Monitor performance of appliances such as refrigerator, dishwasher, freezer and oven. Ensure proper cooking, grilling and storage temperatures.

- Built-in laser pointer identifies target area
- 6:1 Distance to Spot size ratio
- Data Hold and Max Hold (IR-88/88H)
- Fixed emissivity 0.95 covers 90% of surface applications
- Adjustable Emissivity (88H)
- 0.1° resolution (88H)
- Lock for continuous use (88H)
- Programmable alarm setpoint (88H)

- Laser Pointer
- Measure up to 270°C/518°F

- 6:1 Distance to Spot
- Adjustable Emissivity (88H)

**Specifications**

	IR-77H	IR-86/IR-87/IR-88	IR-88H
Range	-30°C~270°C/ -22°F~518°F	-20°C~270°C/ -4°F~518°F	-20°C~270°C/ -4°F~518°F
Response Time	Less than 1 second	Less than 1 second	Less than 750ms
Resolution	0.1°C/°F	1°C/°F	0.1°C/°F
Basic Accuracy	±2% or ±2°C/±4°F	±2% or ±2°C/±4°F	±2% or ±2°C/±4°F
Optical Resolution	6:1	6:1	6:1
Emissivity	Fixed at 0.95	Fixed at 0.95	0.1 to 1 (adjustable)
Battery	1.5V AAA battery x 2	1.5V AAA battery x 2	1.5V AAA battery x 2

Size(HxWxD): IR-77H: 97mm x 57mm x 29mm

IR-86/87/88/88H: 97mm x 53mm x 25mm

Weight: 81g

Accessories :

Two "AAA" Batteries, Manual and Clamshell.



Model IR-88



Model IR-77H







- IR temperature reading on LCD display
- 2G capacity flash memory

**Specifications**

IR Temp. Range	-35°C~230°C (-31°F~446°F)
Response Time	Less than 1second
Basic Accuracy	±2% or ±2°C/±4°F
Optical Resolution	1:1
Resolution	0.1°C/°F
Emissivity	Fixed at 0.95
Flash memory	2G bits



EMC  
EN: 61326

**Size(HxWxD):** 102mm x 35 x 20mm

**Weight:** 48g

**Accessories:**

Two "AAA" batteries, Clamshell.

**IR-15**

**2 in 1 InfraRed Thermometer & Pressure Temperature Chart**

2 in 1 Digital Infrared Thermometer with pressure temperature chart offers fast and accurate IR temperature or temperature references on a large easy-to-read LCD display.

- Rugged, double molded case
- Easy to chart the references of freezing devices

**Specifications**

IR Temp. Range	-30 to 500°C/-22 to 932°F
Response Time	Less than 300 ms
Basic Accuracy	±1.5% or ±2°C/±4°F
Optical Resolution	13:1
Resolution	0.1°C/°F
Emissivity	Fixed at 0.95

**Size(HxWxD):** 154mm x 61mm x 46mm

**Weight:** 190g

**Accessories :**

9V battery, gift box with carrying case.



EMC  
EN: 61326



**AC-8T**

**2 in 1 InfraRed Thermometer & Non-contact AC Voltage**

2 in 1 Infrared Thermometer with Non-contact AC Voltage(NCV) provides easy and safety measurement. Check all types of A/C, electronic and heating systems.

- IR temperature reading on LCD display
- Non-contact Detection of AC Voltage from 100VAC to 1000VAC
- Pocket size with Rugged, double molded case
- NCV self-test function

**Specifications (IR thermometer)**

IR Temp. Range	-35°C~230°C (-31°F~446°F)
Response Time	Less than 1second
Basic Accuracy	±2% or ±2°C/±4°F
Optical Resolution	1:1
Resolution	0.1°C/°F
Emissivity	Fixed at 0.95

**Specifications (NCV)**

Standard	CAT III 1000V
Operating Range	VoltFinder: 100 ~ 1000V AC; 200 ~ 1000V AC (European standard)

**Size(HxWxD):** 158mm x 21mm x 25mm

**Weight:** 34g

**Accessories :**

Two "AAA" batteries, clamshell



EMC  
EN: 61326



**Features**

	IR-98	IR-99
User selectable °C or °F	*	*
Data Hold & Auto Power Off	*	*
Overrange indication	*	*
Max, Min record	*	*
IR with probe temperature	*	*
IR with probe & clamp temperature	*	*

**Specifications**

		IR-98	IR-99
IR Temp. Range	-35°C to 260°C/ -31°F to 500°F	*	*
IR Temp. Resolution	0.1°C/°F	*	*
Optical Resolution	1:1 Distance to Spot size	*	*
Emissivity	Adjustable 0.10~1.0	*	*
Thermistor Temperature Range	-40°C to 260°C/ -40°F to 500°F	*	*
Resolution	0.1°C/°F	*	*
Clamp Temperature Range	-40°C to 200°C/ -40°F to 392°F		*
Response Time	Less than 1 second	*	*
Basic Accuracy	±2% of reading	*	*

**Size(HxWxD):** 140mm x 42mm x 25mm (IR-98)

**Weight:** 80g

**Accessories:**

CR2032 Button battery, Clamshell.

**Size(HxWxD):** 183mm x 52mm x 25mm(IR-99)

**Weight:** 109g

**Accessories:**

CR2032 Button battery, Clamshell.



Model IR-99

Model IR-98



**8810 Series and IR-68 Multifunction InfraRed Thermometers**

8810 Series and IR-68 Non-contact IR Thermometers are multifunctional and low cost, provide quick non-contact wide range temperature measurements. Targeting objects are easy with the bright laser beam.

- Unique flat surface(8810H/8811H/8812H)
- Built-in laser pointer identifies target area
- 16" Gooseneck detector is easy to measure the hard-to-reach areas (IR-68)

**Features**

	8810H/8810	8811H/8811	8812H/8812	IR-68
16"Gooseneck detector				*
User selectable °C or °F	*	*	*	*
Laser targeting	*	*	*	*
Automatic Data Hold	*	*	*	*
Audible and visible Overrange indication		*	*	*
Auto Power Off	*	*	*	*
Backlit LCD Display	*	*	*	*
Low battery indication	*	*	*	*
Wide range		*	*	*
Automatic range			*	*

**Features**

	8810H	8811H	8812H	IR-68
Range	-20°C to 350°C/ -4°F to 662°F	-20°C to 500°C/ -4°F to 932°F	-50°C to 650°C/ -58°F to 1202°F	-50°C to 600°C -58°F to 1112°F
Response time	Less than 1 second.	Less than 1 second.	Less than 1 second.	Less than 1 second.
Resolution	0.1° up to 200°, 1° over 200°	0.1° up to 200°, 1° over 200°	0.1° up to 200°, 1° over 200°	0.1° up to 200°, 1° over 200°
Basic Accuracy	± 2% of reading or±2°C/±4°F	± 2% of reading or±2°C/±4°F	± 2% of reading or±2°C/±4°F	± 2% of reading or±2°C/±4°F
Optical resolution	8:1 Distance to Spot size	8:1 Distance to Spot size	8:1 Distance to Spot size	8:1 Distance to Spot size
Emissivity	Fixed at 0.95	Fixed at 0.95	Fixed at 0.95	Fixed at 0.95

**Size(HxWxD):** 159mm x 79mm x 57mm

**Weight:** 180g

**Accessories:**

9V battery, Clamshell or gift box with carrying case



Model IR-68

Model 8811H



EMC  
EN: 61326  
EN: 60825-1



## Non-Contact Clinical Forehead InfraRed Thermometers



8806U/8806H/8816H Clinical Forehead Infrared Thermometers ensure accurate and stable body temperature readings, which is particular efficient for taking the temperature of newborn babies and very young children. From a distance of around 5cm, all you have to do is pointing it towards the forehead to read the temperature shown on the LCD screen.

- 8806H is portable and easy to take the measurements and store 32 readings.
- 8816H is portable with body temperature datalogger to memory 6000 readings.
- 8806U is portable with USB interface

### Safety Conformance

- ASTM E1965-1998
- EN 980: Graphical symbols for use in the labeling of medical devices
- EN 1041: Information supplied by the manufacturer with medical devices
- EN 60601-1: Medical electrical equipment Part 1: General requirements for safety (IEC:60601-1:1998)
- EN 60601-1-2: Medical electrical equipment Part 1-2: General requirements for safety Collateral standard Electromagnetic compatibility Requirements and test (IEC 60601-1-2:2001)

### Features

	8806H	8806U	8816H
Precise non-contact forehead temperature measurements	*	*	*
Selectable °C or °F & forehead heat detection	*	*	*
Selectable Body and Surface temperature	*	*	*
Set alarm value and sound alarm	*	*	*
Memorization of the last 32 measurements	*	*	*
Automatic Data Hold & Auto power off	*	*	*
Automatic selection range	*	*	*
Display Resolution 0.1°C(0.1°F)	*	*	*
Backlight LCD display	*	*	*
Wireless data transmitting(RF433MHz)			*
6000 Readings memories			*
Records readings with real date and time stamp			*
Read the Max/Min measuring temperature			*
USB interface		*	*

### Specifications

Range(In body mode)	32.0°C to 42.5°C/89.6°F to 108.5°F
Range(In Surface mode)	0°C to 60°C/32°F to 140°F
Resolution	0.1°C/0.1°F
Basic accuracy	32 to 35.9°C/93.2 to 96.6°F(±0.3°C/±0.5°F)
ASTM E1965-1998(2003)	36 to 39°C/96.8 to 96.6 to 102.2°F(±0.2°C/±0.4°F)
Measuring distance	5-15CM
Response time	0.5 second



**Size(HxWxD):** 146mm x 88mm x 43mm (8806H/8816U/8816H)  
**Weight:** 205g

**Accessories:** 2x1.5V“AA”batteries, Carrying case and Gift box.



Model 8806H



Model 8816H



Model 8816R

Body Temperature Datalogger

Non-Contact Forehead IR Thermometer is specially designed to take the body temperature of a person regardless of room temperature.

### Safety Conformance

- ASTM E1965-1998
- EN 980: Graphical symbols for use in the labeling of medical devices
- EN 1041: Information supplied by the manufacturer with medical devices
- EN 60601-1: Medical electrical equipment Part 1: General requirements for safety (IEC:60601-1:1998)
- EN 60601-1-2: Medical electrical equipment Part 1-2: General requirements for safety Collateral standard Electromagnetic compatibility Requirements and test (IEC 60601-1-2:2001)

### Features

	8806	8806S
Housing colour	Blue	Purple
Precise non-contact forehead temperature measurements	*	*
Selectable °C or °F & forehead heat detection	*	*
Selectable Body and Surface temperature	*	*
Set alarm value and sound alarm	*	*
Memorization of the last 32 measurements	*	*
Automatic Data Hold & Auto power off	*	*
Automatic selection range	*	*
Display Resolution 0.1°C(0.1°F)	*	*
Backlight LCD display	*	*

### Specifications

Range(In body mode)	32.0°C to 42.5°C/89.6°F to 108.5°F
Range(In Surface mode)	0°C to 60°C/32°F to 140°F
Resolution	0.1°C/0.1°F
Basic accuracy	32 to 35.9°C/93.2 to 96.6°F(±0.3°C/±0.5°F)
ASTM E1965-1998(2003)	36 to 39°C/96.8 to 96.6 to 102.2°F(±0.2°C/±0.4°F)
Measuring distance	5-15cm
Response time	0.5 second

**Size(HxWxD):** 131mm x 82mm x 35mm (8806/8806S)

**Weight:** 130g

**Accessories:** 2x1.5V“AA”batteries, Carrying case and Gift box.

### DT-608 Mini Non-Contact Forehead Infrared Thermometer

Non-Contact Forehead IR Thermometer is specially designed to take the body temperature of a person regardless of room temperature.

### Features

- Precise non-contact body temperature measurements
- Selectable °C or °F & forehead heat detection
- Selectable Body and Surface temperature
- Automatic Data Hold & Auto power off
- Automatic selection range and Display Resolution 0.1°C(0.1°F)
- 0.5~2.5cm Measuring distance

### Specifications

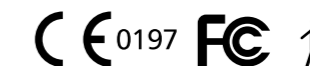
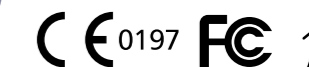
Body temperature range	30.0°C to 42.5°C/86°F to 109°F
Surface temperature range	0°C to 60°C(32°F to 140°F)
Resolution	0.1°C/0.1°F
Basic accuracy	±0.3°C at 30°C~40°C/86°F~104°F Range
Response time	0.5 second
Over range indication	LCD will show “Hi”/ “Lo”
Emissivity	fixed at 0.95
Spectral response	6~14um
Power off	Automatic shut off after 7 seconds, approx.

**Size(HxWxD):** 80mm x 40mm x 23mm

**Weight:** 33g

**Accessories:** One CR2032 button battery, Carrying case and Gift box.

Model 8806S



Model 608





Non-Contact Body IR Thermometer is specially designed to read the body temperature of a person regardless of room temperature.



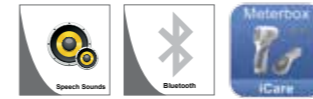
Made for  
iPod iPhone iPad



**Model 806B**



**iCare software**  
for Body Thermometers



Non-Contact Body IR Thermometer is a newly design with European style, specially designed to take the body temperature of a person regardless of room temperature.

Features	806//806D/806R	806C	806CV	806B
Precise non-contact body temperature measurements	*	*	*	*
Selectable °C or °F & forehead heat detection	*	*	*	*
Selectable Body and Surface temperature	*	*	*	*
Set alarm value and sound alarm	*	*	*	*
Memorization of the last 32 measurements	*	*	*	*
Automatic Data Hold & Auto power off	*	*	*	*
Automatic selection range and Display Resolution 0.1°C(0.1°F)	*	*	*	*
Backlight LCD display	*	*	*	*
Meterbox iCare & cloud computing service				*
Red, orange, green LED indicator		*	*	
Talking function			*	
Body IR Thermometer analyzer				*
Measuring distance (Distance to Spot size)	8:1	8:1	8:1	8:1
Bluetooth & Cloud server				*

Specifications	
Body temperature range	30.0°C to 42.5°C/86°F to 109°F
Surface temperature range	0°C to 60°C(32°F to 140°F)
Resolution	0.1°C/0.1°F
Basic accuracy	±0.3°C at 30°C~40°C/86°F~104°F Range
Measuring distance (806)	Body temp.:5-15CM (Surface temp: 8:1 Distance to Spot size)
Response time	0.5 second
Over range indication	LCD will show "Hi"/ "Lo"
Emissivity	fixed at 0.95
Spectral response	6~14um
Power off	Automatic shut off after 7 seconds, approx.
Operating temperature	0°C to 50°C (32°F to 122°F)
Storage temperature	-20°C to 60°C(-4°F to 140°F)
Relative humidity	10%~90%RH operating, <80%RH storage



**Model 806**



**Model 806B**



**Model 806D**



**Model 806R**



**Model 806C**



**Blue backlight**  
Low temperature reading alarm



**Red backlight**  
High temperature reading alarm



**Model 806B**

Body IR Thermometer analyzer

Green backlight  
Normal

**Size(HxWxD):** 150mm x 58mm x 40mm  
**Weight:** 157g  
**Accessories:**  
2 x 1.5V "AAA" battery, Carrying case and Gift box.





886 Infrared Ear Thermometer measures the kind of temperature from the eardrum has been found to be a clinically reliable indicator of body core temperature. It is a high quality product incorporating the latest technology and tested in accordance with international standard. It performs a self-test every time and can be used by consumers in household environment and doctor in clinic as reference.



Model 886



**Features**

Unique Thermoscan Feedback system confirms the thermometer is in the correct position and then confirms an accurate temperature reading has been taken by a constant light and a beep  
Temperature results in degrees °C or degrees °F  
Accurate and safe for newborns and the whole family, new ultra soft and gentle tip is warmed up for accuracy and extra comfort Memory recalls last 8 temperatures

**Specifications**

Temperature unit	°C/°F
Body Temperature range	32.0°C-42.9°C/95°F-109°F
Basic accuracy	35.5°C-42.0°C(±0.1°C/0.2°F)
Resolution	0.1°C/0.1°F
Response time	0.5S
Operating environment	5°C-40°C (41°F-104°F) /15-95%RH

**Size(HxWxD):** 155mm x 50mm x 33mm **Accessories:** 2x1.5V batteries, Gift box.  
**Weight:** 68g

**DT-137 Electron Clinical Thermometer**



Model 137



The special-purpose of electron clinical thermometer is body temperature Measuring, offering safe, accurate and quick temperature readings. Select oral, rectal or axillary as your measurement site. No need to worry about broken glass or mercury hazards.

**Specifications**

Measurement rang	32.0°C -42.9°C(89.6°F-109.2°F)
Measurement accuracy	±0.1°C(0.2°F)between 35°C to 42°C (95°F to 107.6°F)
Operating Temperature	10°C to 40°C(50°Fto 104°F)
Storage temperature	-10°C to +60°C
Memory	For signaling the last measured value
Battery:	3V, CR2032

**Size(HxWxD):** 156mm x 34mm x 22mm **Accessories:** CR2032 3V battery, Clamshell  
**Weight:** 32g

**BP-96/96B/96H Electronic Blood Pressure Monitor**



Model 96B



Model 96



Model 96H



**Specifications**

Systolic/mmHg	Diastolic/mmHg	Meaning	Action
<105	<60	Hypotonic	Consult your doctor
105-140	60-90	Normal	Self-monitoring is sufficient
140-160	90-95	Borderline hypertonic	Consult your doctor
>160	95-105	Mildly hypertonic	Consult your doctor
>160	105-115	Hypertonic, medium severity	Get medical attention
>180	>115	Severely hypertonic	Get medical attention immediately

**Size(HxWxD):** 66mm x 65mm x 30mm(96)  
73mm x 68mm x 28mm(96B)  
85mm x 85mm x 28mm(96H)

**Weight:** 99g(96), 107g(96B),133g (96H)

BP-102/106 Armcuff is suitable for arm from 220 to 320mm circumference, the blood pressure monitor readjust itself to identify the necessary pumping pressure, if the pumping pressure set in the factory is not sufficient, the device identifies this and continues pumping

**Features**

Talking function (BP-102)  
99 x2 memory locations  
The date and time are displayed and stored together with every blood pressure value  
If the battery icon is displayed, the batteries are discharged and the device cannot be used until new batteries are installed

**Specifications**

Display	Digital LCD display
Measurement	Oscillometric method
Pressure Display Range	0-299mmHg
Measurement Range	Pressure: 30 to 280 mmHg
Pulse rate	40 to 199 beats/min
Accuracy	Pressure: Within ±5 mmHg Pulse rate: Within ±5% of reading
Power Supply	4x1.5V "AA" Size Batteries
Operating Environment	10-40°C /15%-85%RH
Storage Environment	-10-50°C/10%-93%RH
Measurable Arm Circumference	220mm-320mm
Safety Classification	Internal power: Type B
Inflation	Automatic inflation with pumping
Air Release	Automatic rapid air release
Pressure Detection	Electrostatic capacity pressure sensor
Pulse Detection	Electrostatic capacity pressure sensor

**Size(HxWxD):** 136mm x 131.5mm x 68.5mm(106),145mm x 113mm x 115mm(102)  
**Weight:** 451g(106),596g(102)

**Accessories:** 4x1.5V "AA" batteries, Carrying case and Gift box.

Model BP-102



Model BP-106

**BS-860 High Definition Personal Video Borescope**

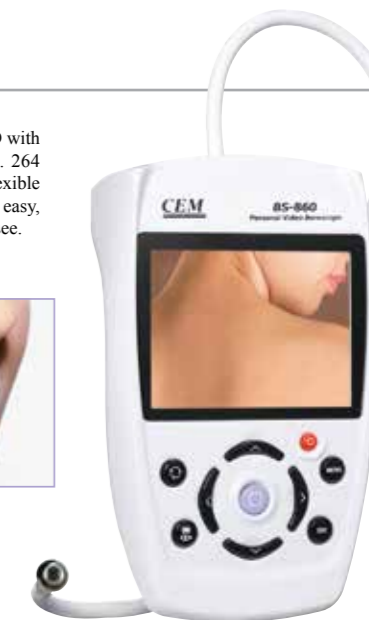
**Features**

3.5" Color TFT LCD  
Camera and Video function  
Support real-time live view  
TV peripherals to support operations in other  
Highlighted with LED to support the operation in the dark  
Built-in 1800mAh lithium battery, support USB charging  
Standby function to support the charge  
Support rotating the image 180° from top to bottom  
Flexible gooseneck camera head with waterproof

BS-860 personal video borescope using 3.5" TFT LCD with high resolution: 320(W) × 240(H) application of H. 264 video codec technology makes images clearer. The flexible and comfortable waterproof (IP67) goose neck provide easy, simple and convenient way to check the place hard to see.



EMC  
EN: 61326



Model 860

**Specifications**

LCD screen type	3.5" TFT
LCD Pixels	320x240
The max number of frames(FPS)	30FPS/S
Picture format from the camera	JPG(640x480)
Camera video format	AVI
Gooseneck length	1m(39")
Camera diameter	6mm(0.23")
Viewing distance	15cm to ∞
Viewing direction	Viewing angle 64°
Zoom and Rotation	2xZoom, 90° rotation
SD card	2GB/Max 32GB
Dust and water proof	IP 67
Working voltage	Li Battery 3.7V/1800mA
Language	Support English, French, German, Spanish

**Size(HxWxD):** 120mm x 87mm x 185mm **Accessories:** 3.7V Li battery, gift box with carrying case.  
**Weight:** 584g

- 3.5" Color TFT LCD
- Flexible gooseneck imager head with waterproof and Easily perform visual inspections in hard to reach areas
- Camera and Video function
- Allows user to view image and video on LCD monitor
- High visibility and 10 degree adjustable LED lighting
- Rechargeable battery with USB cable Support SD memory card expansion
- Menu with multinational language